



Short form catalogue

Power breakers Emax2 air circuit breakers

Power breakers

Air circuit breakers



Contents

The new Emax 2	4
Overview	10
Ekip power controller	12
E1.2	14
E2.2	18
E2.4	20
E2.6	23
Disconnectors	27
Fixed parts	29
Electrical accessories	30
Mechanical accessories	33



Air circuit breakers switch power Emax 2 manages it

Emax 2 is the new benchmark of air circuit breakers. Efficient and simple to use, the range offers innovative solutions for today's needs, while anticipating those of tomorrow.

The air circuit breaker becomes a Power Manager with unique performance that is able to control electrical installations. It is simply integrated into all projects: from standard systems to the most complex and automated networks. Lighting up the future of energy.

CONTROL

Save

Emax

BankofA

Efficiency and control Power needed, when needed



Emax 2 air circuit-breakers up to 6300A have been designed to increase efficiency in all installations: from industrial and naval applications to traditional and renewable power generation installations, buildings, data centers and shopping centers. Reliable protection and systems managed with competence.



Thanks to the exclusive **Power Controller** function, the available power can be utilized more efficiently and cleaner energy can be used. The Power Controller, patented by ABB, disconnects non-priority utilities during the times when consumption limits need to be respected and connects them again as soon as it is appropriate. When required, Emax 2 automatically activates auxiliary power supplies such as generator sets.

The Ekip Touch trip units measure power and energy with precision and save the most recent alarms, events and measurements in order to prevent faults to the installation or trip effectively when necessary.

The exclusive **Network Analyser** function controls the quality of energy in real time.

The innovative **Ekip Touch** and **Hi Touch** protection trip units in the G version include all functions of generator protection switchgear, offering a safe control solution that is ready to use and requires no external devices, wiring or inspections.

Productivity, efficiency, and savings, are guaranteed.

Connectivity

Integration is easy, even from afar



Emax 2 series circuit-breakers have been designed to be integrated directly into all types of switchgear and automation and energy management systems to improve productivity and energy consumption. Complete integration into smart grids, in buildings and industrial plants is possible.



All circuit-breakers can be equipped with communication units for use with Modbus, Profibus and Devicenet protocols and with the modern Modbus TCP, Profinet and Ethernet IP protocols, which can be installed directly on the terminal box at any time.

The integrated IEC61850 communication module enables connection to automation systems and intelligent networks (Smart Grids).

Accurate measurements of current, voltage, power and energy are all available by means of the communication modules and allow the trip units to be used as multimeters.

All circuit-breaker functions are also accessible via the Internet, in complete safety, through the Ekip Link switchgear supervision system and the Ekip Control Panel operator panel. The power and auxiliary connections are optimized to simplify connection to the switchgear. The power terminals, which can be oriented horizontally or vertically, have been designed for the most common busbars, while the push-in connections of the auxiliaries ensure immediate and safe wiring.

Emax 2 power distribution ACBs

Overview

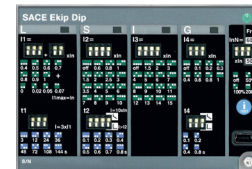
Common data

Rated service voltage Ue	[V]	690
Rated insulation voltage Ui	[V]	1000
Rated impulse withstand voltage Uimp	[kV]	12
Frequency	[Hz]	50 - 60
Number of poles		3 - 4
Version		Fixed - Withdrawable

SACE Emax 2

Performance levels

Rated ultimate short-circuit breaking capacity Icu			[A]
Rated service short-circuit breaking capacity Ics			[A]
Rated short-time withstand current Icw			[A]
Utilization category (according to IEC 60947-2)			[A]
Rated uninterrupted current Iu @ 40°C			[A]
Neutral pole current-carrying capacity for 4-pole CBs			[A]
Rated ultimate short-circuit breaking capacity Icu	400-415 V		[kA]
Rated service short-circuit breaking capacity Ics	690 V		[kA]
Rated short-time withstand current Icw	(1s)		[kA]
Utilization category (according to IEC 60947-2)			[kA]
Dimensions	H - Fixed / Withdrawable		[mm]
	D - Fixed / Withdrawable		[mm]
	W - Fixed 3p / 4p / 4p Fs Withdrawable 3p / 4p / 4p Fs		[mm]
Available versions	Automatic circuit-breakers @ 690-1150 V AC		
	Switch-disconnectors @ 690-1150V AC, 1000 V DC		
	Sectionalizing truck		
	Earthing switch with making capacity		
	Earthing truck		



Protection trip units

Application

Distribution	Protection
Power control	—
Generators	—

Ekip Dip



E1.2				E2.2				E4.2				E6.2		
B	C	N	L	B	N	S	H	N	S	H	V	H	V	X
630	630	250	630	1600	800	250	800	3200	3200	3200	2000	4000	4000	4000
800	800	630	800	2000	1000	800	1000	4000	4000	4000	2500	5000	5000	5000
1000	1000	800	1000		1250	1000	1250				3200	6300	6300	6300
1250	1250	1000	1250		1600	1250	1600				4000			
1600	1600	1250			2000	1600	2000							
		1600			2500	2000	2500							
					2500									
100				100				100				50-100		
42	50	66	150	42	66	85	100	66	85	100	150	100	150	200
42	42	50	60	42	66	66	85	66	66	85	100	100	100	120
100	100	100 ⁽¹⁾	100	100	100	100	100	100	100	100	85	100	100	100
42	42	50	15	42	66	66	85	66	66	85	100	100	100	120
B	B	B	A	B	B	B	B	B	B	B	B	B	B	B
296 / 363.5				371 / 425				371 / 425				371 / 425		
183 / 271				270 / 383				270 / 383				270 / 383		
210 / 280 278 / 348				276 / 366 317 / 407				384 / 510 425 / 551				762 / 888 / 1014 803 / 929 / 1069		
•				•				•				•		
•				•				•				•		
•				•				•				•		
•				•				•				•		
•				•				•				•		

⁽¹⁾cs: 50kA for 400V...440V voltage



Ekip Touch

Protection and Measurement



Ekip Hi-Touch

Protection, Measurement, Network analyzer

Protection, Measurement, Network analyzer

—



Ekip G Touch

—

Protection and Measurement

Protection and Measurement



Ekip G Hi-Touch

—

Protection, Measurement, Network analyzer

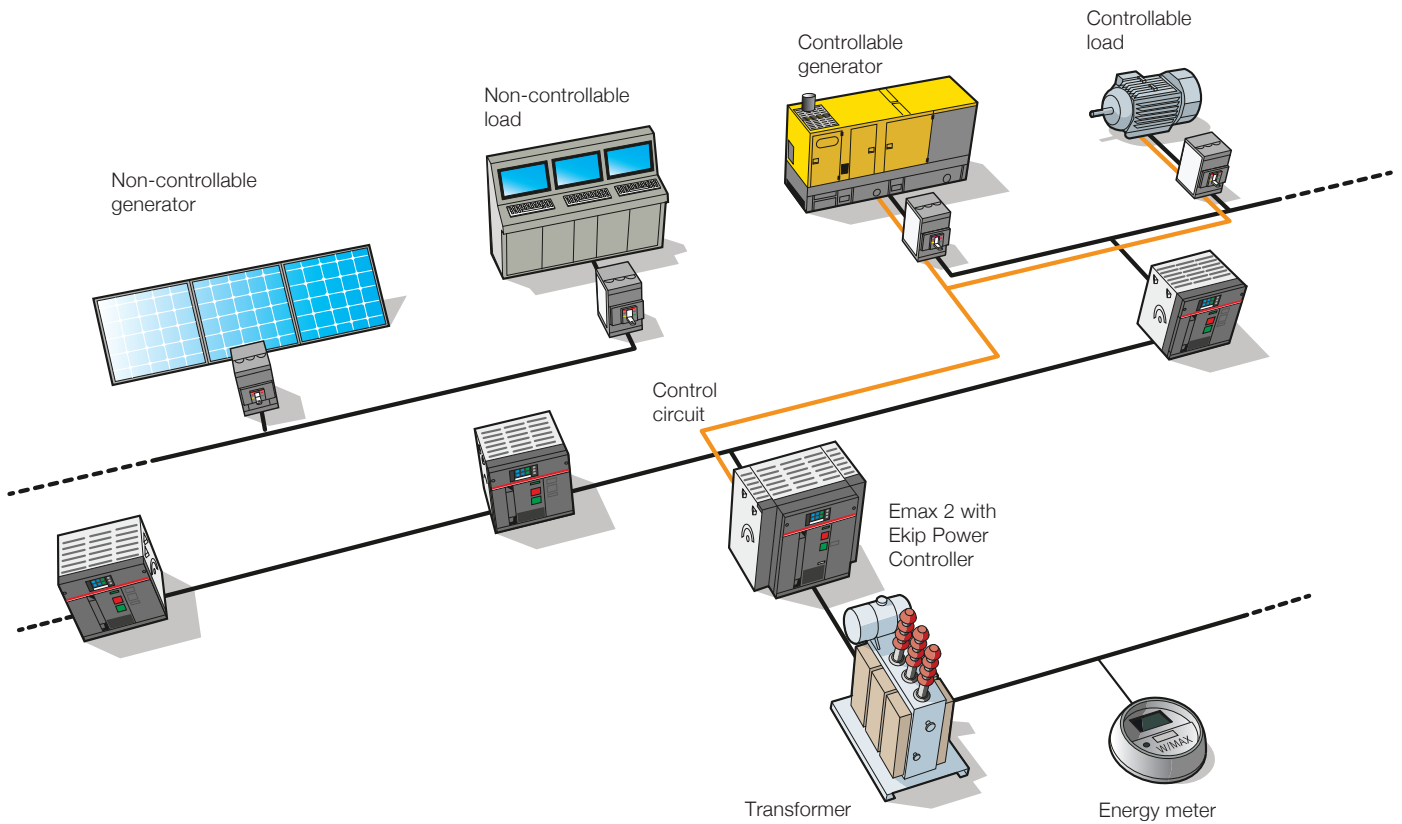
Protection, Measurement, Network analyzer

Protection trip units for power control

Ekip power controller

The exclusive Ekip Power Controller function, patented by ABB and available on new Emax 2 circuit-breakers, monitors installation loads and generators, permitting the power consumed to be limited and allowing savings on electricity bills.

Ekip Power Controller, which can be used with all Ekip Touch trip units of the Emax 2 series, effectively helps to improve energy efficiency by managing the entire low voltage electrical system. It is, in fact, able to adapt the demand for power according to the availability of the energy source, the time of day and the costs indicated in the current pricing plan. In this way Ekip Power Controller is able to maintain power consumption within the limits defined, thereby optimizing the costs of managing the installation and reducing emissions.



Distinctive features

Reduction of energy costs with minimum impact. The loads are disconnected from the power supply for short periods, in the minimum number necessary and in a fixed order of priority, enabling power consumption peaks to be limited. This allows the contract drawn up with the energy provider to be renegotiated, reducing the power allocated, with a consequent reduction in total energy costs.

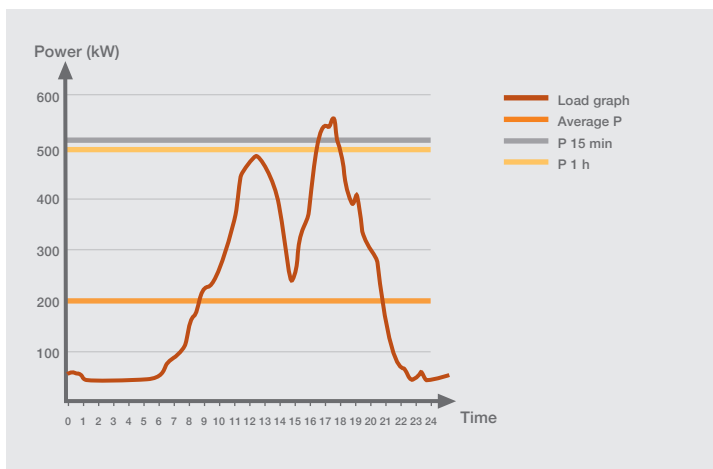
Power limited only when necessary. Ekip Power Controller manages up to four different time bands: it is therefore possible to respect a particular power limit according to whether it is during the day (peak) or night (off peak). In this way, consumption during the day when rates are at their highest can be limited.

Simple to install. Ekip Power Controller allows the installation to be managed efficiently with a simple architecture. Thanks to a patented design, it is sufficient to measure the total power of the installation without having to measure the power consumed by each load. Installation costs and times are thereby reduced to a minimum.

Ready to use. Ekip Power Controller does not require the writing, implementation and testing of complicated programmes for PLC or computer because the logic has already been implemented in the protection unit and is ready to use; it is sufficient to set the installation parameters from a smartphone or directly from the circuit-breaker display.

Improvement of the efficiency of the electrical system. Ekip Power Controller significantly helps to flatten the load curve, limiting the use of peaking power plants in favour of base load power plants with greater efficiency.

Graph of daily load



Perfect integration into intelligent networks. Thanks to integrated communication modules, Ekip Power Controller can receive the maximum absorbable power directly from the medium voltage control system, determining consumption for the next 15 minutes. Ekip Power Controller, according to the information received, manages the switching off of non-priority loads or the switching on of reserve generators. Ekip Power Controller gives maximum priority to non-programmable preferred energy sources, such as wind and solar, and they are therefore considered uninterruptable. In the event the production of internal power to the controlled network is reduced, due, for example, to decreased production of solar power, Ekip Power Controller will disconnect the necessary loads to respect the consumption limit set.

Perfect integration in self-generation systems. This benefit is used, for example, in installations with a system of cogeneration. Ekip Power Controller controls the total consumption drawn from the electrical network, interrupting non-indispensable loads when production is reduced and reconnecting them when generator power is sufficient to not exceed limits. There are multiple advantages: reduction in energy costs, maximum use of local production and greater overall energy efficiency.

Emax 2 power distribution ACBs

Type E1.2B



Emax E1.2B

Size	lu	Icu (440 V)	Icw (1s)	Type	Product Hierarchy 170009 Order Code			
					Fixed Breaker Front Connection (F)		Moving Portion (MP)	
					3 poles	4 poles	3 poles	4 poles
E1.2B	630	42	42	E1.2B 630 Ekip Dip LI	1SDA070701R1	1SDA071331R1	1SDA072051R1	1SDA072681R1
				E1.2B 630 Ekip Dip LSI	1SDA070702R1	1SDA071332R1	1SDA072052R1	1SDA072682R1
				E1.2B 630 Ekip Dip LSIG	1SDA070703R1	1SDA071333R1	1SDA072053R1	1SDA072683R1
				E1.2B 630 Ekip Dip LI	1SDA070704R1	1SDA071334R1	1SDA072054R1	1SDA072684R1
				E1.2B 630 Ekip Dip LSI	1SDA070705R1	1SDA071335R1	1SDA072055R1	1SDA072685R1
				E1.2B 630 Ekip Dip LSIG	1SDA070706R1	1SDA071336R1	1SDA072056R1	1SDA072686R1
				E1.2B 630 Ekip Hi-Touch LSI	1SDA070708R1	1SDA071338R1	1SDA072058R1	1SDA072688R1
				E1.2B 630 Ekip Hi-Touch LSIG	1SDA070709R1	1SDA071339R1	1SDA072059R1	1SDA072689R1
	800	42	42	E1.2B 800 Ekip Dip LI	1SDA070741R1	1SDA071371R1	1SDA072091R1	1SDA072721R1
				E1.2B 800 Ekip Dip LSI	1SDA070742R1	1SDA071372R1	1SDA072092R1	1SDA072722R1
				E1.2B 800 Ekip Dip LSIG	1SDA070743R1	1SDA071373R1	1SDA072093R1	1SDA072723R1
				E1.2B 800 Ekip Dip LI	1SDA070744R1	1SDA071374R1	1SDA072094R1	1SDA072724R1
				E1.2B 800 Ekip Dip LSI	1SDA070745R1	1SDA071375R1	1SDA072095R1	1SDA072725R1
				E1.2B 800 Ekip Dip LSIG	1SDA070746R1	1SDA071376R1	1SDA072096R1	1SDA072726R1
				E1.2B 800 Ekip Hi-Touch LSI	1SDA070748R1	1SDA071378R1	1SDA072098R1	1SDA072728R1
				E1.2B 800 Ekip Hi-Touch LSIG	1SDA070749R1	1SDA071379R1	1SDA072099R1	1SDA072729R1
	1000	42	42	E1.2B 1000 Ekip Dip LI	1SDA070781R1	1SDA071411R1	1SDA072131R1	1SDA072761R1
				E1.2B 1000 Ekip Dip LSI	1SDA070782R1	1SDA071412R1	1SDA072132R1	1SDA072762R1
				E1.2B 1000 Ekip Dip LSIG	1SDA070783R1	1SDA071413R1	1SDA072133R1	1SDA072763R1
				E1.2B 1000 Ekip Dip LI	1SDA070784R1	1SDA071414R1	1SDA072134R1	1SDA072764R1
				E1.2B 1000 Ekip Dip LSI	1SDA070785R1	1SDA071415R1	1SDA072135R1	1SDA072765R1
				E1.2B 1000 Ekip Dip LSIG	1SDA070786R1	1SDA071416R1	1SDA072136R1	1SDA072766R1
				E1.2B 1000 Ekip Hi-Touch LSI	1SDA070788R1	1SDA071418R1	1SDA072138R1	1SDA072768R1
				E1.2B 1000 Ekip Hi-Touch LSIG	1SDA070789R1	1SDA071419R1	1SDA072139R1	1SDA072769R1
	1250	42	42	E1.2B 1250 Ekip Dip LI	1SDA070821R1	1SDA071451R1	1SDA072171R1	1SDA072801R1
				E1.2B 1250 Ekip Dip LSI	1SDA070822R1	1SDA071452R1	1SDA072172R1	1SDA072802R1
				E1.2B 1250 Ekip Dip LSIG	1SDA070823R1	1SDA071453R1	1SDA072173R1	1SDA072803R1
				E1.2B 1250 Ekip Dip LI	1SDA070824R1	1SDA071454R1	1SDA072174R1	1SDA072804R1
E1.2B 1250 Ekip Dip LSI				1SDA070825R1	1SDA071455R1	1SDA072175R1	1SDA072805R1	
E1.2B 1250 Ekip Dip LSIG				1SDA070826R1	1SDA071456R1	1SDA072176R1	1SDA072806R1	
E1.2B 1250 Ekip Hi-Touch LSI				1SDA070828R1	1SDA071458R1	1SDA072178R1	1SDA072808R1	
E1.2B 1250 Ekip Hi-Touch LSIG				1SDA070829R1	1SDA071459R1	1SDA072179R1	1SDA072809R1	
1600	42	42	E1.2B 1600 Ekip Dip LI	1SDA070861R1	1SDA071491R1	1SDA072211R1	1SDA072841R1	
			E1.2B 1600 Ekip Dip LSI	1SDA070862R1	1SDA071492R1	1SDA072212R1	1SDA072842R1	
			E1.2B 1600 Ekip Dip LSIG	1SDA070863R1	1SDA071493R1	1SDA072213R1	1SDA072843R1	
			E1.2B 1600 Ekip Dip LI	1SDA070864R1	1SDA071494R1	1SDA072214R1	1SDA072844R1	
			E1.2B 1600 Ekip Dip LSI	1SDA070865R1	1SDA071495R1	1SDA072215R1	1SDA072845R1	
			E1.2B 1600 Ekip Dip LSIG	1SDA070866R1	1SDA071496R1	1SDA072216R1	1SDA072846R1	
			E1.2B 1600 Ekip Hi-Touch LSI	1SDA070868R1	1SDA071498R1	1SDA072218R1	1SDA072848R1	
			E1.2B 1600 Ekip Hi-Touch LSIG	1SDA070869R1	1SDA071499R1	1SDA072219R1	1SDA072849R1	

Emax 2 power distribution ACBs

Type E1.2C



Emax E1.2C

Product Hierarchy 170009 Order Code

Size	lu	Icu (440 V)	Icw (1s)	Type	Product Hierarchy 170009 Order Code			
					Fixed Breaker Front Connection (F)		Moving Portion (MP)	
					3 poles	4 poles	3 poles	4 poles
E1.2C	630	50	42	E1.2C 630 Ekip Dip LI	1SDA070711R1	1SDA071341R1	1SDA072061R1	1SDA072691R1
				E1.2C 630 Ekip Dip LSI	1SDA070712R1	1SDA071342R1	1SDA072062R1	1SDA072692R1
				E1.2C 630 Ekip Dip LSIG	1SDA070713R1	1SDA071343R1	1SDA072063R1	1SDA072693R1
				E1.2C 630 Ekip Touch LI	1SDA070714R1	1SDA071344R1	1SDA072064R1	1SDA072694R1
				E1.2C 630 Ekip Touch LSI	1SDA070715R1	1SDA071345R1	1SDA072065R1	1SDA072695R1
				E1.2C 630 Ekip Touch LSIG	1SDA070716R1	1SDA071346R1	1SDA072066R1	1SDA072696R1
				E1.2C 630 Ekip Hi-Touch LSI	1SDA070718R1	1SDA071348R1	1SDA072068R1	1SDA072698R1
	E1.2C 630 Ekip Hi-Touch LSIG	1SDA070719R1	1SDA071349R1	1SDA072069R1	1SDA072699R1			
	800	50	42	E1.2C 800 Ekip Dip LI	1SDA070751R1	1SDA071381R1	1SDA072101R1	1SDA072731R1
				E1.2C 800 Ekip Dip LSI	1SDA070752R1	1SDA071382R1	1SDA072102R1	1SDA072732R1
				E1.2C 800 Ekip Dip LSIG	1SDA070753R1	1SDA071383R1	1SDA072103R1	1SDA072733R1
				E1.2C 800 Ekip Touch LI	1SDA070754R1	1SDA071384R1	1SDA072104R1	1SDA072734R1
				E1.2C 800 Ekip Touch LSI	1SDA070755R1	1SDA071385R1	1SDA072105R1	1SDA072735R1
				E1.2C 800 Ekip Touch LSIG	1SDA070756R1	1SDA071386R1	1SDA072106R1	1SDA072736R1
				E1.2C 800 Ekip Hi-Touch LSI	1SDA070758R1	1SDA071388R1	1SDA072108R1	1SDA072738R1
	E1.2C 800 Ekip Hi-Touch LSIG	1SDA070759R1	1SDA071389R1	1SDA072109R1	1SDA072739R1			
	1000	50	42	E1.2C 1000 Ekip Dip LI	1SDA070791R1	1SDA071421R1	1SDA072141R1	1SDA072771R1
				E1.2C 1000 Ekip Dip LSI	1SDA070792R1	1SDA071422R1	1SDA072142R1	1SDA072772R1
				E1.2C 1000 Ekip Dip LSIG	1SDA070793R1	1SDA071423R1	1SDA072143R1	1SDA072773R1
				E1.2C 1000 Ekip Touch LI	1SDA070794R1	1SDA071424R1	1SDA072144R1	1SDA072774R1
				E1.2C 1000 Ekip Touch LSI	1SDA070795R1	1SDA071425R1	1SDA072145R1	1SDA072775R1
E1.2C 1000 Ekip Touch LSIG				1SDA070796R1	1SDA071426R1	1SDA072146R1	1SDA072776R1	
E1.2C 1000 Ekip Hi-Touch LSI				1SDA070798R1	1SDA071428R1	1SDA072148R1	1SDA072778R1	
E1.2C 1000 Ekip Hi-Touch LSIG	1SDA070799R1	1SDA071429R1	1SDA072149R1	1SDA072779R1				
1250	50	42	E1.2C 1250 Ekip Dip LI	1SDA070831R1	1SDA071461R1	1SDA072181R1	1SDA072811R1	
			E1.2C 1250 Ekip Dip LSI	1SDA070832R1	1SDA071462R1	1SDA072182R1	1SDA072812R1	
			E1.2C 1250 Ekip Dip LSIG	1SDA070833R1	1SDA071463R1	1SDA072183R1	1SDA072813R1	
			E1.2C 1250 Ekip Touch LI	1SDA070834R1	1SDA071464R1	1SDA072184R1	1SDA072814R1	
			E1.2C 1250 Ekip Touch LSI	1SDA070835R1	1SDA071465R1	1SDA072185R1	1SDA072815R1	
			E1.2C 1250 Ekip Touch LSIG	1SDA070836R1	1SDA071466R1	1SDA072186R1	1SDA072816R1	
			E1.2C 1250 Ekip Hi-Touch LSI	1SDA070838R1	1SDA071468R1	1SDA072188R1	1SDA072818R1	
E1.2C 1250 Ekip Hi-Touch LSIG	1SDA070839R1	1SDA071469R1	1SDA072189R1	1SDA072819R1				
1600	50	42	E1.2C 1600 Ekip Dip LI	1SDA070871R1	1SDA071501R1	1SDA072221R1	1SDA072851R1	
			E1.2C 1600 Ekip Dip LSI	1SDA070872R1	1SDA071502R1	1SDA072222R1	1SDA072852R1	
			E1.2C 1600 Ekip Dip LSIG	1SDA070873R1	1SDA071503R1	1SDA072223R1	1SDA072853R1	
			E1.2C 1600 Ekip Touch LI	1SDA070874R1	1SDA071504R1	1SDA072224R1	1SDA072854R1	
			E1.2C 1600 Ekip Touch LSI	1SDA070875R1	1SDA071505R1	1SDA072225R1	1SDA072855R1	
			E1.2C 1600 Ekip Touch LSIG	1SDA070876R1	1SDA071506R1	1SDA072226R1	1SDA072856R1	
			E1.2C 1600 Ekip Hi-Touch LSI	1SDA070878R1	1SDA071508R1	1SDA072228R1	1SDA072858R1	
E1.2C 1600 Ekip Hi-Touch LSIG	1SDA070879R1	1SDA071509R1	1SDA072229R1	1SDA072859R1				

Emax 2 power distribution ACBs

Type E1.2N



Emax E1.2N

Size	Iu	Icu (440 V)	Icw (1s)	Type	Product Hierarchy 170009 Order Code			
					Fixed Breaker Front Connection (F)		Moving Portion (MP)	
					3 poles	4 poles	3 poles	4 poles
E1.2N	250	66	50	E1.2N 250 Ekip Dip LI	1SDA070691R1	1SDA071321R1	1SDA072041R1	1SDA072671R1
				E1.2N 250 Ekip Dip LSI	1SDA070692R1	1SDA071322R1	1SDA072042R1	1SDA072672R1
				E1.2N 250 Ekip Dip LSIG	1SDA070693R1	1SDA071323R1	1SDA072043R1	1SDA072673R1
				E1.2N 250 Ekip Touch LI	1SDA070694R1	1SDA071324R1	1SDA072044R1	1SDA072674R1
				E1.2N 250 Ekip Touch LSI	1SDA070695R1	1SDA071325R1	1SDA072045R1	1SDA072675R1
				E1.2N 250 Ekip Touch LSIG	1SDA070696R1	1SDA071326R1	1SDA072046R1	1SDA072676R1
				E1.2N 250 Ekip Hi-Touch LSI	1SDA070698R1	1SDA071328R1	1SDA072048R1	1SDA072678R1
				E1.2N 250 Ekip Hi-Touch LSIG	1SDA070699R1	1SDA071329R1	1SDA072049R1	1SDA072679R1
	630	66	50	E1.2N 630 Ekip Dip LI	1SDA070721R1	1SDA071351R1	1SDA072071R1	1SDA072701R1
				E1.2N 630 Ekip Dip LSI	1SDA070722R1	1SDA071352R1	1SDA072072R1	1SDA072702R1
				E1.2N 630 Ekip Dip LSIG	1SDA070723R1	1SDA071353R1	1SDA072073R1	1SDA072703R1
				E1.2N 630 Ekip Touch LI	1SDA070724R1	1SDA071354R1	1SDA072074R1	1SDA072704R1
				E1.2N 630 Ekip Touch LSI	1SDA070725R1	1SDA071355R1	1SDA072075R1	1SDA072705R1
				E1.2N 630 Ekip Touch LSIG	1SDA070726R1	1SDA071356R1	1SDA072076R1	1SDA072706R1
				E1.2N 630 Ekip Hi-Touch LSI	1SDA070728R1	1SDA071358R1	1SDA072078R1	1SDA072708R1
				E1.2N 630 Ekip Hi-Touch LSIG	1SDA070729R1	1SDA071359R1	1SDA072079R1	1SDA072709R1
	800	66	50	E1.2N 800 Ekip Dip LI	1SDA070761R1	1SDA071391R1	1SDA072111R1	1SDA072741R1
				E1.2N 800 Ekip Dip LSI	1SDA070762R1	1SDA071392R1	1SDA072112R1	1SDA072742R1
				E1.2N 800 Ekip Dip LSIG	1SDA070763R1	1SDA071393R1	1SDA072113R1	1SDA072743R1
				E1.2N 800 Ekip Touch LI	1SDA070764R1	1SDA071394R1	1SDA072114R1	1SDA072744R1
				E1.2N 800 Ekip Touch LSI	1SDA070765R1	1SDA071395R1	1SDA072115R1	1SDA072745R1
				E1.2N 800 Ekip Touch LSIG	1SDA070766R1	1SDA071396R1	1SDA072116R1	1SDA072746R1
				E1.2N 800 Ekip Hi-Touch LSI	1SDA070768R1	1SDA071398R1	1SDA072118R1	1SDA072748R1
				E1.2N 800 Ekip Hi-Touch LSIG	1SDA070769R1	1SDA071399R1	1SDA072119R1	1SDA072749R1
	1000	66	50	E1.2N 1000 Ekip Dip LI	1SDA070801R1	1SDA071431R1	1SDA072151R1	1SDA072781R1
				E1.2N 1000 Ekip Dip LSI	1SDA070802R1	1SDA071432R1	1SDA072152R1	1SDA072782R1
				E1.2N 1000 Ekip Dip LSIG	1SDA070803R1	1SDA071433R1	1SDA072153R1	1SDA072783R1
				E1.2N 1000 Ekip Touch LI	1SDA070804R1	1SDA071434R1	1SDA072154R1	1SDA072784R1
E1.2N 1000 Ekip Touch LSI				1SDA070805R1	1SDA071435R1	1SDA072155R1	1SDA072785R1	
E1.2N 1000 Ekip Touch LSIG				1SDA070806R1	1SDA071436R1	1SDA072156R1	1SDA072786R1	
E1.2N 1000 Ekip Hi-Touch LSI				1SDA070808R1	1SDA071438R1	1SDA072158R1	1SDA072788R1	
E1.2N 1000 Ekip Hi-Touch LSIG				1SDA070809R1	1SDA071439R1	1SDA072159R1	1SDA072789R1	
1250	66	50	E1.2N 1250 Ekip Dip LI	1SDA070841R1	1SDA071471R1	1SDA072191R1	1SDA072821R1	
			E1.2N 1250 Ekip Dip LSI	1SDA070842R1	1SDA071472R1	1SDA072192R1	1SDA072822R1	
			E1.2N 1250 Ekip Dip LSIG	1SDA070843R1	1SDA071473R1	1SDA072193R1	1SDA072823R1	
			E1.2N 1250 Ekip Touch LI	1SDA070844R1	1SDA071474R1	1SDA072194R1	1SDA072824R1	
			E1.2N 1250 Ekip Touch LSI	1SDA070845R1	1SDA071475R1	1SDA072195R1	1SDA072825R1	
			E1.2N 1250 Ekip Touch LSIG	1SDA070846R1	1SDA071476R1	1SDA072196R1	1SDA072826R1	
			E1.2N 1250 Ekip Hi-Touch LSI	1SDA070848R1	1SDA071478R1	1SDA072198R1	1SDA072828R1	
			E1.2N 1250 Ekip Hi-Touch LSIG	1SDA070849R1	1SDA071479R1	1SDA072199R1	1SDA072829R1	
1600	66	50	E1.2N 1600 Ekip Dip LI	1SDA070881R1	1SDA071511R1	1SDA072231R1	1SDA072861R1	
			E1.2N 1600 Ekip Dip LSI	1SDA070882R1	1SDA071512R1	1SDA072232R1	1SDA072862R1	
			E1.2N 1600 Ekip Dip LSIG	1SDA070883R1	1SDA071513R1	1SDA072233R1	1SDA072863R1	
			E1.2N 1600 Ekip Touch LI	1SDA070884R1	1SDA071514R1	1SDA072234R1	1SDA072864R1	
			E1.2N 1600 Ekip Touch LSI	1SDA070885R1	1SDA071515R1	1SDA072235R1	1SDA072865R1	
			E1.2N 1600 Ekip Touch LSIG	1SDA070886R1	1SDA071516R1	1SDA072236R1	1SDA072866R1	
			E1.2N 1600 Ekip Hi-Touch LSI	1SDA070888R1	1SDA071518R1	1SDA072238R1	1SDA072868R1	
			E1.2N 1600 Ekip Hi-Touch LSIG	1SDA070889R1	1SDA071519R1	1SDA072239R1	1SDA072869R1	

Emax 2 power distribution ACBs

Type E1.2L-B



Emax E1.2L-B

Size	Iu	Icu (440 V)	Icw (1s)	Type	Product Hierarchy 170009 Order Code						
					Fixed Breaker Front Connection (F)		Moving Portion (MP)				
					3 poles	4 poles	3 poles	4 poles			
E1.2L	630	130	15	E1.2L 630 Ekip Dip LI	1SDA070731R1	1SDA071361R1	1SDA072081R1	1SDA072711R1			
				E1.2L 630 Ekip Dip LSI	1SDA070732R1	1SDA071362R1	1SDA072082R1	1SDA072712R1			
				E1.2L 630 Ekip Dip LSIG	1SDA070733R1	1SDA071363R1	1SDA072083R1	1SDA072713R1			
				E1.2L 630 Ekip Touch LI	1SDA070734R1	1SDA071364R1	1SDA072084R1	1SDA072714R1			
				E1.2L 630 Ekip Touch LSI	1SDA070735R1	1SDA071365R1	1SDA072085R1	1SDA072715R1			
				E1.2L 630 Ekip Touch LSIG	1SDA070736R1	1SDA071366R1	1SDA072086R1	1SDA072716R1			
				E1.2L 630 Ekip Hi-Touch LSI	1SDA070738R1	1SDA071368R1	1SDA072088R1	1SDA072718R1			
				E1.2L 630 Ekip Hi-Touch LSIG	1SDA070739R1	1SDA071369R1	1SDA072089R1	1SDA072719R1			
				800	130	15	E1.2L 800 Ekip Dip LI	1SDA070771R1	1SDA071401R1	1SDA072121R1	1SDA072751R1
							E1.2L 800 Ekip Dip LSI	1SDA070772R1	1SDA071402R1	1SDA072122R1	1SDA072752R1
							E1.2L 800 Ekip Dip LSIG	1SDA070773R1	1SDA071403R1	1SDA072123R1	1SDA072753R1
							E1.2L 800 Ekip Touch LI	1SDA070774R1	1SDA071404R1	1SDA072124R1	1SDA072754R1
	E1.2L 800 Ekip Touch LSI	1SDA070775R1	1SDA071405R1				1SDA072125R1	1SDA072755R1			
	E1.2L 800 Ekip Touch LSIG	1SDA070776R1	1SDA071406R1				1SDA072126R1	1SDA072756R1			
	E1.2L 800 Ekip Hi-Touch LSI	1SDA070778R1	1SDA071408R1				1SDA072128R1	1SDA072758R1			
	E1.2L 800 Ekip Hi-Touch LSIG	1SDA070779R1	1SDA071409R1				1SDA072129R1	1SDA072759R1			
	1000	130	15	E1.2L 1000 Ekip Dip LI	1SDA070811R1	1SDA071441R1	1SDA072161R1	1SDA072791R1			
				E1.2L 1000 Ekip Dip LSI	1SDA070812R1	1SDA071442R1	1SDA072162R1	1SDA072792R1			
				E1.2L 1000 Ekip Dip LSIG	1SDA070813R1	1SDA071443R1	1SDA072163R1	1SDA072793R1			
				E1.2L 1000 Ekip Touch LI	1SDA070814R1	1SDA071444R1	1SDA072164R1	1SDA072794R1			
				E1.2L 1000 Ekip Touch LSI	1SDA070815R1	1SDA071445R1	1SDA072165R1	1SDA072795R1			
				E1.2L 1000 Ekip Touch LSIG	1SDA070816R1	1SDA071446R1	1SDA072166R1	1SDA072796R1			
				E1.2L 1000 Ekip Hi-Touch LSI	1SDA070818R1	1SDA071448R1	1SDA072168R1	1SDA072798R1			
				E1.2L 1000 Ekip Hi-Touch LSIG	1SDA070819R1	1SDA071449R1	1SDA072169R1	1SDA072799R1			
				1250	130	15	E1.2L 1250 Ekip Dip LI	1SDA070851R1	1SDA071481R1	1SDA072201R1	1SDA072831R1
							E1.2L 1250 Ekip Dip LSI	1SDA070852R1	1SDA071482R1	1SDA072202R1	1SDA072832R1
							E1.2L 1250 Ekip Dip LSIG	1SDA070853R1	1SDA071483R1	1SDA072203R1	1SDA072833R1
							E1.2L 1250 Ekip Touch LI	1SDA070854R1	1SDA071484R1	1SDA072204R1	1SDA072834R1
	E1.2L 1250 Ekip Touch LSI	1SDA070855R1	1SDA071485R1				1SDA072205R1	1SDA072835R1			
	E1.2L 1250 Ekip Touch LSIG	1SDA070856R1	1SDA071486R1				1SDA072206R1	1SDA072836R1			
	E1.2L 1250 Ekip Hi-Touch LSI	1SDA070858R1	1SDA071488R1				1SDA072208R1	1SDA072838R1			
	E1.2L 1250 Ekip Hi-Touch LSIG	1SDA070859R1	1SDA071489R1				1SDA072209R1	1SDA072839R1			
	E2.2B	1600	42	42	E2.2B 1600 Ekip Dip LI	1SDA070981R1	1SDA071611R1	1SDA072331R1	1SDA072961R1		
					E2.2B 1600 Ekip Dip LSI	1SDA070982R1	1SDA071612R1	1SDA072332R1	1SDA072962R1		
					E2.2B 1600 Ekip Dip LSIG	1SDA070983R1	1SDA071613R1	1SDA072333R1	1SDA072963R1		
					E2.2B 1600 Ekip Touch LI	1SDA070984R1	1SDA071614R1	1SDA072334R1	1SDA072964R1		
E2.2B 1600 Ekip Touch LSI					1SDA070985R1	1SDA071615R1	1SDA072335R1	1SDA072965R1			
E2.2B 1600 Ekip Touch LSIG					1SDA070986R1	1SDA071616R1	1SDA072336R1	1SDA072966R1			
E2.2B 1600 Ekip Hi-Touch LSI					1SDA070988R1	1SDA071618R1	1SDA072338R1	1SDA072968R1			
E2.2B 1600 Ekip Hi-Touch LSIG					1SDA070989R1	1SDA071619R1	1SDA072339R1	1SDA072969R1			
2000					42	42	E2.2B 2000 Ekip Dip LI	1SDA071021R1	1SDA071651R1	1SDA072371R1	1SDA073001R1
							E2.2B 2000 Ekip Dip LSI	1SDA071022R1	1SDA071652R1	1SDA072372R1	1SDA073002R1
							E2.2B 2000 Ekip Dip LSIG	1SDA071023R1	1SDA071653R1	1SDA072373R1	1SDA073003R1
							E2.2B 2000 Ekip Touch LI	1SDA071024R1	1SDA071654R1	1SDA072374R1	1SDA073004R1
		E2.2B 2000 Ekip Touch LSI	1SDA071025R1	1SDA071655R1			1SDA072375R1	1SDA073005R1			
		E2.2B 2000 Ekip Touch LSIG	1SDA071026R1	1SDA071656R1			1SDA072376R1	1SDA073006R1			
		E2.2B 2000 Ekip Hi-Touch LSI	1SDA071028R1	1SDA071658R1			1SDA072378R1	1SDA073008R1			
		E2.2B 2000 Ekip Hi-Touch LSIG	1SDA071029R1	1SDA071659R1			1SDA072379R1	1SDA073009R1			

Emax 2 power distribution ACBs

Type E2.2N



Emax E2.2N

Product Hierarchy 170009 Order Code

Size	lu	Icu (440 V)	Icw (1s)	Type	Fixed Breaker Rear Connection (HR)		Moving Portion (MP)	
					3 poles	4 poles	3 poles	4 poles
E2.2N	800	66	66	E2.2N 800 Ekip Dip LI	1SDA070891R1	1SDA071521R1	1SDA072241R1	1SDA072871R1
				E2.2N 800 Ekip Dip LSI	1SDA070892R1	1SDA071522R1	1SDA072242R1	1SDA072872R1
				E2.2N 800 Ekip Dip LSIG	1SDA070893R1	1SDA071523R1	1SDA072243R1	1SDA072873R1
				E2.2N 800 Ekip Touch LI	1SDA070894R1	1SDA071524R1	1SDA072244R1	1SDA072874R1
				E2.2N 800 Ekip Touch LSI	1SDA070895R1	1SDA071525R1	1SDA072245R1	1SDA072875R1
				E2.2N 800 Ekip Touch LSIG	1SDA070896R1	1SDA071526R1	1SDA072246R1	1SDA072876R1
				E2.2N 800 Ekip Hi-Touch LSI	1SDA070898R1	1SDA071528R1	1SDA072248R1	1SDA072878R1
				E2.2N 800 Ekip Hi-Touch LSIG	1SDA070899R1	1SDA071529R1	1SDA072249R1	1SDA072879R1
	1000	66	66	E2.2N 1000 Ekip Dip LI	1SDA070921R1	1SDA071551R1	1SDA072271R1	1SDA072901R1
				E2.2N 1000 Ekip Dip LSI	1SDA070922R1	1SDA071552R1	1SDA072272R1	1SDA072902R1
				E2.2N 1000 Ekip Dip LSIG	1SDA070923R1	1SDA071553R1	1SDA072273R1	1SDA072903R1
				E2.2N 1000 Ekip Touch LI	1SDA070924R1	1SDA071554R1	1SDA072274R1	1SDA072904R1
				E2.2N 1000 Ekip Touch LSI	1SDA070925R1	1SDA071555R1	1SDA072275R1	1SDA072905R1
				E2.2N 1000 Ekip Touch LSIG	1SDA070926R1	1SDA071556R1	1SDA072276R1	1SDA072906R1
				E2.2N 1000 Ekip Hi-Touch LSI	1SDA070928R1	1SDA071558R1	1SDA072278R1	1SDA072908R1
				E2.2N 1000 Ekip Hi-Touch LSIG	1SDA070929R1	1SDA071559R1	1SDA072279R1	1SDA072909R1
	1250	66	66	E2.2N 1250 Ekip Dip LI	1SDA070951R1	1SDA071581R1	1SDA072301R1	1SDA072931R1
				E2.2N 1250 Ekip Dip LSI	1SDA070952R1	1SDA071582R1	1SDA072302R1	1SDA072932R1
				E2.2N 1250 Ekip Dip LSIG	1SDA070953R1	1SDA071583R1	1SDA072303R1	1SDA072933R1
				E2.2N 1250 Ekip Touch LI	1SDA070954R1	1SDA071584R1	1SDA072304R1	1SDA072934R1
				E2.2N 1250 Ekip Touch LSI	1SDA070955R1	1SDA071585R1	1SDA072305R1	1SDA072935R1
				E2.2N 1250 Ekip Touch LSIG	1SDA070956R1	1SDA071586R1	1SDA072306R1	1SDA072936R1
				E2.2N 1250 Ekip Hi-Touch LSI	1SDA070958R1	1SDA071588R1	1SDA072308R1	1SDA072938R1
				E2.2N 1250 Ekip Hi-Touch LSIG	1SDA070959R1	1SDA071589R1	1SDA072309R1	1SDA072939R1
	1600	66	66	E2.2N 1600 Ekip Dip LI	1SDA070991R1	1SDA071621R1	1SDA072341R1	1SDA072971R1
				E2.2N 1600 Ekip Dip LSI	1SDA070992R1	1SDA071622R1	1SDA072342R1	1SDA072972R1
				E2.2N 1600 Ekip Dip LSIG	1SDA070993R1	1SDA071623R1	1SDA072343R1	1SDA072973R1
				E2.2N 1600 Ekip Touch LI	1SDA070994R1	1SDA071624R1	1SDA072344R1	1SDA072974R1
E2.2N 1600 Ekip Touch LSI				1SDA070995R1	1SDA071625R1	1SDA072345R1	1SDA072975R1	
E2.2N 1600 Ekip Touch LSIG				1SDA070996R1	1SDA071626R1	1SDA072346R1	1SDA072976R1	
E2.2N 1600 Ekip Hi-Touch LSI				1SDA070998R1	1SDA071628R1	1SDA072348R1	1SDA072978R1	
E2.2N 1600 Ekip Hi-Touch LSIG				1SDA070999R1	1SDA071629R1	1SDA072349R1	1SDA072979R1	
2000	66	66	E2.2N 2000 Ekip Dip LI	1SDA071031R1	1SDA071661R1	1SDA072381R1	1SDA073011R1	
			E2.2N 2000 Ekip Dip LSI	1SDA071032R1	1SDA071662R1	1SDA072382R1	1SDA073012R1	
			E2.2N 2000 Ekip Dip LSIG	1SDA071033R1	1SDA071663R1	1SDA072383R1	1SDA073013R1	
			E2.2N 2000 Ekip Touch LI	1SDA071034R1	1SDA071664R1	1SDA072384R1	1SDA073014R1	
			E2.2N 2000 Ekip Touch LSI	1SDA071035R1	1SDA071665R1	1SDA072385R1	1SDA073015R1	
			E2.2N 2000 Ekip Touch LSIG	1SDA071036R1	1SDA071666R1	1SDA072386R1	1SDA073016R1	
			E2.2N 2000 Ekip Hi-Touch LSI	1SDA071038R1	1SDA071668R1	1SDA072388R1	1SDA073018R1	
			E2.2N 2000 Ekip Hi-Touch LSIG	1SDA071039R1	1SDA071669R1	1SDA072389R1	1SDA073019R1	
2500	66	66	E2.2N 2500 Ekip Dip LI	1SDA071061R1	1SDA071691R1	1SDA072411R1	1SDA073041R1	
			E2.2N 2500 Ekip Dip LSI	1SDA071062R1	1SDA071692R1	1SDA072412R1	1SDA073042R1	
			E2.2N 2500 Ekip Dip LSIG	1SDA071063R1	1SDA071693R1	1SDA072413R1	1SDA073043R1	
			E2.2N 2500 Ekip Touch LI	1SDA071064R1	1SDA071694R1	1SDA072414R1	1SDA073044R1	
			E2.2N 2500 Ekip Touch LSI	1SDA071065R1	1SDA071695R1	1SDA072415R1	1SDA073045R1	
			E2.2N 2500 Ekip Touch LSIG	1SDA071066R1	1SDA071696R1	1SDA072416R1	1SDA073046R1	
			E2.2N 2500 Ekip Hi-Touch LSI	1SDA071068R1	1SDA071698R1	1SDA072418R1	1SDA073048R1	
			E2.2N 2500 Ekip Hi-Touch LSIG	1SDA071069R1	1SDA071699R1	1SDA072419R1	1SDA073049R1	

Emax 2 power distribution ACBs

Type E2.2S



Emax E2.2S

Product Hierarchy 1700009 Order

Size	lu	Icu (440 V)	Icw (1s)	Type	Fixed Breaker Rear Connection (HR)		Moving Portion (MP)	
					3 poles	4 poles	3 poles	4 poles
E2.2S	250	85	66	E2.2S 250 Ekip Dip LI	1SDA073628R1	1SDA073638R1	1SDA073648R1	1SDA073658R1
				E2.2S 250 Ekip Dip LSI	1SDA073629R1	1SDA073639R1	1SDA073649R1	1SDA073659R1
				E2.2S 250 Ekip Dip LSIG	1SDA073630R1	1SDA073640R1	1SDA073650R1	1SDA073660R1
				E2.2S 250 Ekip Touch LI	1SDA073631R1	1SDA073641R1	1SDA073651R1	1SDA073661R1
				E2.2S 250 Ekip Touch LSI	1SDA073632R1	1SDA073642R1	1SDA073652R1	1SDA073662R1
				E2.2S 250 Ekip Touch LSIG	1SDA073633R1	1SDA073643R1	1SDA073653R1	1SDA073663R1
				E2.2S 250 Ekip HI-Touch LSI	1SDA073635R1	1SDA073645R1	1SDA073655R1	1SDA073665R1
				E2.2S 250 Ekip HI-Touch LSIG	1SDA073636R1	1SDA073646R1	1SDA073656R1	1SDA073666R1
				800	85	66	E2.2S 800 Ekip Dip LI	1SDA070901R1
	E2.2S 800 Ekip Dip LSI	1SDA070902R1	1SDA071532R1				1SDA072252R1	1SDA072882R1
	E2.2S 800 Ekip Dip LSIG	1SDA070903R1	1SDA071533R1				1SDA072253R1	1SDA072883R1
	E2.2S 800 Ekip Touch LI	1SDA070904R1	1SDA071534R1				1SDA072254R1	1SDA072884R1
	E2.2S 800 Ekip Touch LSI	1SDA070905R1	1SDA071535R1				1SDA072255R1	1SDA072885R1
	E2.2S 800 Ekip Touch LSIG	1SDA070906R1	1SDA071536R1				1SDA072256R1	1SDA072886R1
	E2.2S 800 Ekip HI-Touch LSI	1SDA070908R1	1SDA071538R1				1SDA072258R1	1SDA072888R1
	E2.2S 800 Ekip HI-Touch LSIG	1SDA070909R1	1SDA071539R1				1SDA072259R1	1SDA072889R1
	1000	85	66				E2.2S 1000 Ekip Dip LI	1SDA070931R1
				E2.2S 1000 Ekip Dip LSI	1SDA070932R1	1SDA071562R1	1SDA072282R1	1SDA072912R1
				E2.2S 1000 Ekip Dip LSIG	1SDA070933R1	1SDA071563R1	1SDA072283R1	1SDA072913R1
				E2.2S 1000 Ekip Touch LI	1SDA070934R1	1SDA071564R1	1SDA072284R1	1SDA072914R1
				E2.2S 1000 Ekip Touch LSI	1SDA070935R1	1SDA071565R1	1SDA072285R1	1SDA072915R1
				E2.2S 1000 Ekip Touch LSIG	1SDA070936R1	1SDA071566R1	1SDA072286R1	1SDA072916R1
				E2.2S 1000 Ekip HI-Touch LSI	1SDA070938R1	1SDA071568R1	1SDA072288R1	1SDA072918R1
				E2.2S 1000 Ekip HI-Touch LSIG	1SDA070939R1	1SDA071569R1	1SDA072289R1	1SDA072919R1
				1250	85	66	E2.2S 1250 Ekip Dip LI	1SDA070961R1
	E2.2S 1250 Ekip Dip LSI	1SDA070962R1	1SDA071592R1				1SDA072312R1	1SDA072942R1
	E2.2S 1250 Ekip Dip LSIG	1SDA070963R1	1SDA071593R1				1SDA072313R1	1SDA072943R1
	E2.2S 1250 Ekip Touch LI	1SDA070964R1	1SDA071594R1				1SDA072314R1	1SDA072944R1
	E2.2S 1250 Ekip Touch LSI	1SDA070965R1	1SDA071595R1				1SDA072315R1	1SDA072945R1
	E2.2S 1250 Ekip Touch LSIG	1SDA070966R1	1SDA071596R1				1SDA072316R1	1SDA072946R1
	E2.2S 1250 Ekip HI-Touch LSI	1SDA070968R1	1SDA071598R1				1SDA072318R1	1SDA072948R1
	E2.2S 1250 Ekip HI-Touch LSIG	1SDA070969R1	1SDA071599R1				1SDA072319R1	1SDA072949R1
	1600	85	66				E2.2S 1600 Ekip Dip LI	1SDA071001R1
				E2.2S 1600 Ekip Dip LSI	1SDA071002R1	1SDA071632R1	1SDA072352R1	1SDA072982R1
				E2.2S 1600 Ekip Dip LSIG	1SDA071003R1	1SDA071633R1	1SDA072353R1	1SDA072983R1
				E2.2S 1600 Ekip Touch LI	1SDA071004R1	1SDA071634R1	1SDA072354R1	1SDA072984R1
E2.2S 1600 Ekip Touch LSI				1SDA071005R1	1SDA071635R1	1SDA072355R1	1SDA072985R1	
E2.2S 1600 Ekip Touch LSIG				1SDA071006R1	1SDA071636R1	1SDA072356R1	1SDA072986R1	
E2.2S 1600 Ekip HI-Touch LSI				1SDA071008R1	1SDA071638R1	1SDA072358R1	1SDA072988R1	
E2.2S 1600 Ekip HI-Touch LSIG				1SDA071009R1	1SDA071639R1	1SDA072359R1	1SDA072989R1	
2000				85	66	E2.2S 2000 Ekip Dip LI	1SDA071041R1	1SDA071671R1
	E2.2S 2000 Ekip Dip LSI	1SDA071042R1	1SDA071672R1			1SDA072392R1	1SDA073022R1	
	E2.2S 2000 Ekip Dip LSIG	1SDA071043R1	1SDA071673R1			1SDA072393R1	1SDA073023R1	
	E2.2S 2000 Ekip Touch LI	1SDA071044R1	1SDA071674R1			1SDA072394R1	1SDA073024R1	
	E2.2S 2000 Ekip Touch LSI	1SDA071045R1	1SDA071675R1			1SDA072395R1	1SDA073025R1	
	E2.2S 2000 Ekip Touch LSIG	1SDA071046R1	1SDA071676R1			1SDA072396R1	1SDA073026R1	
	E2.2S 2000 Ekip HI-Touch LSI	1SDA071048R1	1SDA071678R1			1SDA072398R1	1SDA073028R1	
	E2.2S 2000 Ekip HI-Touch LSIG	1SDA071049R1	1SDA071679R1			1SDA072399R1	1SDA073029R1	
	2500	85	66			E2.2S 2500 Ekip Dip LI	1SDA071071R1	1SDA071701R1
E2.2S 2500 Ekip Dip LSI				1SDA071072R1	1SDA071702R1	1SDA072422R1	1SDA073052R1	
E2.2S 2500 Ekip Dip LSIG				1SDA071073R1	1SDA071703R1	1SDA072423R1	1SDA073053R1	
E2.2S 2500 Ekip Touch LI				1SDA071074R1	1SDA071704R1	1SDA072424R1	1SDA073054R1	
E2.2S 2500 Ekip Touch LSI				1SDA071075R1	1SDA071705R1	1SDA072425R1	1SDA073055R1	
E2.2S 2500 Ekip Touch LSIG				1SDA071076R1	1SDA071706R1	1SDA072426R1	1SDA073056R1	
E2.2S 2500 Ekip HI-Touch LSI				1SDA071078R1	1SDA071708R1	1SDA072428R1	1SDA073058R1	
E2.2S 2500 Ekip HI-Touch LSIG				1SDA071079R1	1SDA071709R1	1SDA072429R1	1SDA073059R1	

Emax 2 power distribution ACBs

Type E2.2H



Emax E2.2H

Product Hierarchy 1700009 Order Code

Size	Iu	Icu (440 V)	Icw (1s)	Type	Fixed Breaker Rear Connection (HR)		Moving Portion (MP)	
					3 poles	4 poles	3 poles	4 poles
E2.2H	800	100	85	E2.2H 800 Ekip Dip LI	1SDA070911R1	1SDA071541R1	1SDA072261R1	1SDA072891R1
				E2.2H 800 Ekip Dip LSI	1SDA070912R1	1SDA071542R1	1SDA072262R1	1SDA072892R1
				E2.2H 800 Ekip Dip LSIG	1SDA070913R1	1SDA071543R1	1SDA072263R1	1SDA072893R1
				E2.2H 800 Ekip Touch LI	1SDA070914R1	1SDA071544R1	1SDA072264R1	1SDA072894R1
				E2.2H 800 Ekip Touch LSI	1SDA070915R1	1SDA071545R1	1SDA072265R1	1SDA072895R1
				E2.2H 800 Ekip Touch LSIG	1SDA070916R1	1SDA071546R1	1SDA072266R1	1SDA072896R1
				E2.2H 800 Ekip Hi-Touch LSI	1SDA070918R1	1SDA071548R1	1SDA072268R1	1SDA072898R1
				E2.2H 800 Ekip Hi-Touch LSIG	1SDA070919R1	1SDA071549R1	1SDA072269R1	1SDA072899R1
	1000	100	85	E2.2H 1000 Ekip Dip LI	1SDA070941R1	1SDA071571R1	1SDA072291R1	1SDA072921R1
				E2.2H 1000 Ekip Dip LSI	1SDA070942R1	1SDA071572R1	1SDA072292R1	1SDA072922R1
				E2.2H 1000 Ekip Dip LSIG	1SDA070943R1	1SDA071573R1	1SDA072293R1	1SDA072923R1
				E2.2H 1000 Ekip Touch LI	1SDA070944R1	1SDA071574R1	1SDA072294R1	1SDA072924R1
				E2.2H 1000 Ekip Touch LSI	1SDA070945R1	1SDA071575R1	1SDA072295R1	1SDA072925R1
				E2.2H 1000 Ekip Touch LSIG	1SDA070946R1	1SDA071576R1	1SDA072296R1	1SDA072926R1
				E2.2H 1000 Ekip Hi-Touch LSI	1SDA070948R1	1SDA071578R1	1SDA072298R1	1SDA072928R1
				E2.2H 1000 Ekip Hi-Touch LSIG	1SDA070949R1	1SDA071579R1	1SDA072299R1	1SDA072929R1
	1250	100	85	E2.2H 1250 Ekip Dip LI	1SDA070971R1	1SDA071601R1	1SDA072321R1	1SDA072951R1
				E2.2H 1250 Ekip Dip LSI	1SDA070972R1	1SDA071602R1	1SDA072322R1	1SDA072952R1
				E2.2H 1250 Ekip Dip LSIG	1SDA070973R1	1SDA071603R1	1SDA072323R1	1SDA072953R1
				E2.2H 1250 Ekip Touch LI	1SDA070974R1	1SDA071604R1	1SDA072324R1	1SDA072954R1
				E2.2H 1250 Ekip Touch LSI	1SDA070975R1	1SDA071605R1	1SDA072325R1	1SDA072955R1
				E2.2H 1250 Ekip Touch LSIG	1SDA070976R1	1SDA071606R1	1SDA072326R1	1SDA072956R1
				E2.2H 1250 Ekip Hi-Touch LSI	1SDA070978R1	1SDA071608R1	1SDA072328R1	1SDA072958R1
				E2.2H 1250 Ekip Hi-Touch LSIG	1SDA070979R1	1SDA071609R1	1SDA072329R1	1SDA072959R1
	1600	100	85	E2.2H 1600 Ekip Dip LI	1SDA071011R1	1SDA071641R1	1SDA072361R1	1SDA072991R1
				E2.2H 1600 Ekip Dip LSI	1SDA071012R1	1SDA071642R1	1SDA072362R1	1SDA072992R1
				E2.2H 1600 Ekip Dip LSIG	1SDA071013R1	1SDA071643R1	1SDA072363R1	1SDA072993R1
				E2.2H 1600 Ekip Touch LI	1SDA071014R1	1SDA071644R1	1SDA072364R1	1SDA072994R1
E2.2H 1600 Ekip Touch LSI				1SDA071015R1	1SDA071645R1	1SDA072365R1	1SDA072995R1	
E2.2H 1600 Ekip Touch LSIG				1SDA071016R1	1SDA071646R1	1SDA072366R1	1SDA072996R1	
E2.2H 1600 Ekip Hi-Touch LSI				1SDA071018R1	1SDA071648R1	1SDA072368R1	1SDA072998R1	
E2.2H 1600 Ekip Hi-Touch LSIG				1SDA071019R1	1SDA071649R1	1SDA072369R1	1SDA072999R1	
2000	100	85	E2.2H 2000 Ekip Dip LI	1SDA071051R1	1SDA071681R1	1SDA072401R1	1SDA073031R1	
			E2.2H 2000 Ekip Dip LSI	1SDA071052R1	1SDA071682R1	1SDA072402R1	1SDA073032R1	
			E2.2H 2000 Ekip Dip LSIG	1SDA071053R1	1SDA071683R1	1SDA072403R1	1SDA073033R1	
			E2.2H 2000 Ekip Touch LI	1SDA071054R1	1SDA071684R1	1SDA072404R1	1SDA073034R1	
			E2.2H 2000 Ekip Touch LSI	1SDA071055R1	1SDA071685R1	1SDA072405R1	1SDA073035R1	
			E2.2H 2000 Ekip Touch LSIG	1SDA071056R1	1SDA071686R1	1SDA072406R1	1SDA073036R1	
			E2.2H 2000 Ekip Hi-Touch LSI	1SDA071058R1	1SDA071688R1	1SDA072408R1	1SDA073038R1	
			E2.2H 2000 Ekip Hi-Touch LSIG	1SDA071059R1	1SDA071689R1	1SDA072409R1	1SDA073039R1	
2500	100	85	E2.2H 2500 Ekip Dip LI	1SDA071081R1	1SDA071711R1	1SDA072431R1	1SDA073061R1	
			E2.2H 2500 Ekip Dip LSI	1SDA071082R1	1SDA071712R1	1SDA072432R1	1SDA073062R1	
			E2.2H 2500 Ekip Dip LSIG	1SDA071083R1	1SDA071713R1	1SDA072433R1	1SDA073063R1	
			E2.2H 2500 Ekip Touch LI	1SDA071084R1	1SDA071714R1	1SDA072434R1	1SDA073064R1	
			E2.2H 2500 Ekip Touch LSI	1SDA071085R1	1SDA071715R1	1SDA072435R1	1SDA073065R1	
			E2.2H 2500 Ekip Touch LSIG	1SDA071086R1	1SDA071716R1	1SDA072436R1	1SDA073066R1	
			E2.2H 2500 Ekip Hi-Touch LSI	1SDA071088R1	1SDA071718R1	1SDA072438R1	1SDA073068R1	
			E2.2H 2500 Ekip Hi-Touch LSIG	1SDA071089R1	1SDA071719R1	1SDA072439R1	1SDA073069R1	

Emax 2 power distribution ACBs

Type E4.2N/H for power distribution



Emax E4.2N

Size	Iu	Icu (440 V)	Icw (1s)	Type	Product Hierarchy 170009 Order Code			
					Fixed Breaker Rear Connection (HR)		Moving Portion (MP)	
					3 poles	4 poles	3 poles	4 poles
E4.2N	3200	66	66	E4.2N 3200 Ekip Dip LI	1SDA071141R1	1SDA071771R1	1SDA072491R1	1SDA073121R1
				E4.2N 3200 Ekip Dip LSI	1SDA071142R1	1SDA071772R1	1SDA072492R1	1SDA073122R1
				E4.2N 3200 Ekip Dip LSIG	1SDA071143R1	1SDA071773R1	1SDA072493R1	1SDA073123R1
				E4.2N 3200 Ekip Touch LI	1SDA071144R1	1SDA071774R1	1SDA072494R1	1SDA073124R1
				E4.2N 3200 Ekip Touch LSI	1SDA071145R1	1SDA071775R1	1SDA072495R1	1SDA073125R1
				E4.2N 3200 Ekip Touch LSIG	1SDA071146R1	1SDA071776R1	1SDA072496R1	1SDA073126R1
				E4.2N 3200 Ekip Hi-Touch LSI	1SDA071148R1	1SDA071778R1	1SDA072498R1	1SDA073128R1
				E4.2N 3200 Ekip Hi-Touch LSIG	1SDA071149R1	1SDA071779R1	1SDA072499R1	1SDA073129R1
	4000	66	66	E4.2N 4000 Ekip Dip LI	1SDA071191R1	1SDA071821R1	1SDA072541R1	1SDA073171R1
				E4.2N 4000 Ekip Dip LSI	1SDA071192R1	1SDA071822R1	1SDA072542R1	1SDA073172R1
				E4.2N 4000 Ekip Dip LSIG	1SDA071193R1	1SDA071823R1	1SDA072543R1	1SDA073173R1
				E4.2N 4000 Ekip Touch LI	1SDA071194R1	1SDA071824R1	1SDA072544R1	1SDA073174R1
				E4.2N 4000 Ekip Touch LSI	1SDA071195R1	1SDA071825R1	1SDA072545R1	1SDA073175R1
				E4.2N 4000 Ekip Touch LSIG	1SDA071196R1	1SDA071826R1	1SDA072546R1	1SDA073176R1
				E4.2N 4000 Ekip Hi-Touch LSI	1SDA071198R1	1SDA071828R1	1SDA072548R1	1SDA073178R1
				E4.2N 4000 Ekip Hi-Touch LSIG	1SDA071199R1	1SDA071829R1	1SDA072549R1	1SDA073179R1
E4.2S	3200	85	66	E4.2S 3200 Ekip Dip LI	1SDA071151R1	1SDA071781R1	1SDA072501R1	1SDA073131R1
				E4.2S 3200 Ekip Dip LSI	1SDA071152R1	1SDA071782R1	1SDA072502R1	1SDA073132R1
				E4.2S 3200 Ekip Dip LSIG	1SDA071153R1	1SDA071783R1	1SDA072503R1	1SDA073133R1
				E4.2S 3200 Ekip Touch LI	1SDA071154R1	1SDA071784R1	1SDA072504R1	1SDA073134R1
				E4.2S 3200 Ekip Touch LSI	1SDA071155R1	1SDA071785R1	1SDA072505R1	1SDA073135R1
				E4.2S 3200 Ekip Touch LSIG	1SDA071156R1	1SDA071786R1	1SDA072506R1	1SDA073136R1
				E4.2S 3200 Ekip Hi-Touch LSI	1SDA071158R1	1SDA071788R1	1SDA072508R1	1SDA073138R1
				E4.2S 3200 Ekip Hi-Touch LSIG	1SDA071159R1	1SDA071789R1	1SDA072509R1	1SDA073139R1
	4000	85	66	E4.2S 4000 Ekip Dip LI	1SDA071201R1	1SDA071831R1	1SDA072551R1	1SDA073181R1
				E4.2S 4000 Ekip Dip LSI	1SDA071202R1	1SDA071832R1	1SDA072552R1	1SDA073182R1
				E4.2S 4000 Ekip Dip LSIG	1SDA071203R1	1SDA071833R1	1SDA072553R1	1SDA073183R1
				E4.2S 4000 Ekip Touch LI	1SDA071204R1	1SDA071834R1	1SDA072554R1	1SDA073184R1
				E4.2S 4000 Ekip Touch LSI	1SDA071205R1	1SDA071835R1	1SDA072555R1	1SDA073185R1
				E4.2S 4000 Ekip Touch LSIG	1SDA071206R1	1SDA071836R1	1SDA072556R1	1SDA073186R1
				E4.2S 4000 Ekip Hi-Touch LSI	1SDA071208R1	1SDA071838R1	1SDA072558R1	1SDA073188R1
				E4.2S 4000 Ekip Hi-Touch LSIG	1SDA071209R1	1SDA071839R1	1SDA072559R1	1SDA073189R1
E4.2H	3200	100	85	E4.2H 3200 Ekip Dip LI	1SDA071161R1	1SDA071791R1	1SDA072511R1	1SDA073141R1
				E4.2H 3200 Ekip Dip LSI	1SDA071162R1	1SDA071792R1	1SDA072512R1	1SDA073142R1
				E4.2H 3200 Ekip Dip LSIG	1SDA071163R1	1SDA071793R1	1SDA072513R1	1SDA073143R1
				E4.2H 3200 Ekip Touch LI	1SDA071164R1	1SDA071794R1	1SDA072514R1	1SDA073144R1
				E4.2H 3200 Ekip Touch LSI	1SDA071165R1	1SDA071795R1	1SDA072515R1	1SDA073145R1
				E4.2H 3200 Ekip Touch LSIG	1SDA071166R1	1SDA071796R1	1SDA072516R1	1SDA073146R1
				E4.2H 3200 Ekip Hi-Touch LSI	1SDA071168R1	1SDA071798R1	1SDA072518R1	1SDA073148R1
				E4.2H 3200 Ekip Hi-Touch LSIG	1SDA071169R1	1SDA071799R1	1SDA072519R1	1SDA073149R1
	4000	100	85	E4.2H 4000 Ekip Dip LI	1SDA071211R1	1SDA071841R1	1SDA072561R1	1SDA073191R1
				E4.2H 4000 Ekip Dip LSI	1SDA071212R1	1SDA071842R1	1SDA072562R1	1SDA073192R1
				E4.2H 4000 Ekip Dip LSIG	1SDA071213R1	1SDA071843R1	1SDA072563R1	1SDA073193R1
				E4.2H 4000 Ekip Touch LI	1SDA071214R1	1SDA071844R1	1SDA072564R1	1SDA073194R1
				E4.2H 4000 Ekip Touch LSI	1SDA071215R1	1SDA071845R1	1SDA072565R1	1SDA073195R1
				E4.2H 4000 Ekip Touch LSIG	1SDA071216R1	1SDA071846R1	1SDA072566R1	1SDA073196R1
				E4.2H 4000 Ekip Hi-Touch LSI	1SDA071218R1	1SDA071848R1	1SDA072568R1	1SDA073198R1
				E4.2H 4000 Ekip Hi-Touch LSIG	1SDA071219R1	1SDA071849R1	1SDA072569R1	1SDA073199R1

Emax 2 power distribution ACBs

Type E4.2V



Emax E4.2V

Product Hierarchy 170009 Order Code

Size	Iu	Icu (440 V)	Icw (1s)	Type	Fixed Breaker Rear Connection (HR)		Moving Portion (MP)	
					3 poles	4 poles	3 poles	4 poles
E4.2V	2000	150	100	E4.2S 2000 Ekip Dip LI	1SDA071101R1	1SDA071731R1	1SDA072451R1	1SDA073081R1
				E4.2S 2000 Ekip Dip LSI	1SDA071102R1	1SDA071732R1	1SDA072452R1	1SDA073082R1
				E4.2V 2000 Ekip Dip LSI	1SDA071103R1	1SDA071733R1	1SDA072453R1	1SDA073083R1
				E4.2V 2000 Ekip Touch LI	1SDA071104R1	1SDA071734R1	1SDA072454R1	1SDA073084R1
				E4.2V 2000 Ekip Touch LSI	1SDA071105R1	1SDA071735R1	1SDA072455R1	1SDA073085R1
				E4.2V 2000 Ekip Touch LSI	1SDA071106R1	1SDA071736R1	1SDA072456R1	1SDA073086R1
				E4.2V 2000 Ekip Hi-Touch LSI	1SDA071108R1	1SDA071738R1	1SDA072458R1	1SDA073088R1
				E4.2V 2000 Ekip Hi-Touch LSI	1SDA071109R1	1SDA071739R1	1SDA072459R1	1SDA073089R1
	2500	150	100	E4.2V 2500 Ekip Dip LI	1SDA071121R1	1SDA071751R1	1SDA072471R1	1SDA073101R1
				E4.2V 2500 Ekip Dip LSI	1SDA071122R1	1SDA071752R1	1SDA072472R1	1SDA073102R1
				E4.2V 2500 Ekip Dip LSI	1SDA071123R1	1SDA071753R1	1SDA072473R1	1SDA073103R1
				E4.2V 2500 Ekip Touch LI	1SDA071124R1	1SDA071754R1	1SDA072474R1	1SDA073104R1
				E4.2V 2500 Ekip Touch LSI	1SDA071125R1	1SDA071755R1	1SDA072475R1	1SDA073105R1
				E4.2V 2500 Ekip Touch LSI	1SDA071126R1	1SDA071756R1	1SDA072476R1	1SDA073106R1
				E4.2V 2500 Ekip Hi-Touch LSI	1SDA071128R1	1SDA071758R1	1SDA072478R1	1SDA073108R1
				E4.2V 2500 Ekip Hi-Touch LSI	1SDA071129R1	1SDA071759R1	1SDA072479R1	1SDA073109R1
	3200	150	100	E4.2V 3200 Ekip Dip LI	1SDA071171R1	1SDA071801R1	1SDA072521R1	1SDA073151R1
				E4.2V 3200 Ekip Dip LSI	1SDA071172R1	1SDA071802R1	1SDA072522R1	1SDA073152R1
				E4.2V 3200 Ekip Dip LSI	1SDA071173R1	1SDA071803R1	1SDA072523R1	1SDA073153R1
				E4.2V 3200 Ekip Touch LI	1SDA071174R1	1SDA071804R1	1SDA072524R1	1SDA073154R1
				E4.2V 3200 Ekip Touch LSI	1SDA071175R1	1SDA071805R1	1SDA072525R1	1SDA073155R1
				E4.2V 3200 Ekip Touch LSI	1SDA071176R1	1SDA071806R1	1SDA072526R1	1SDA073156R1
				E4.2V 3200 Ekip Hi-Touch LSI	1SDA071178R1	1SDA071808R1	1SDA072528R1	1SDA073158R1
				E4.2V 3200 Ekip Hi-Touch LSI	1SDA071179R1	1SDA071809R1	1SDA072529R1	1SDA073159R1
	4000	150	100	E4.2V 4000 Ekip Dip LI	1SDA071221R1	1SDA071851R1	1SDA072571R1	1SDA073201R1
				E4.2V 4000 Ekip Dip LSI	1SDA071222R1	1SDA071852R1	1SDA072572R1	1SDA073202R1
				E4.2V 4000 Ekip Dip LSI	1SDA071223R1	1SDA071853R1	1SDA072573R1	1SDA073203R1
				E4.2V 4000 Ekip Touch LI	1SDA071224R1	1SDA071854R1	1SDA072574R1	1SDA073204R1
E4.2V 4000 Ekip Touch LSI				1SDA071225R1	1SDA071855R1	1SDA072575R1	1SDA073205R1	
E4.2V 4000 Ekip Touch LSI				1SDA071226R1	1SDA071856R1	1SDA072576R1	1SDA073206R1	
E4.2V 4000 Ekip Hi-Touch LSI				1SDA071228R1	1SDA071858R1	1SDA072578R1	1SDA073208R1	
E4.2V 4000 Ekip Hi-Touch LSI				1SDA071229R1	1SDA071859R1	1SDA072579R1	1SDA073209R1	

Emax 2 power distribution ACBs

Type E6.2H/V



Emax E6.2H

Product Hierarchy 1700009 Order Code

Size	Iu	Icu (440 V)	Icw (1s)	Type	Fixed Breaker Rear Connection (HR)				
					3 poles		4 poles		
					Moving Portion (MP)		4 poles		
E6.2H	4000	100	100	E6.2H 4000 Ekip Dip LI	1SDA071231R1	1SDA071861R1	1SDA072581R1	1SDA073211R1	
				E6.2H 4000 Ekip Dip LSI	1SDA071232R1	1SDA071862R1	1SDA072582R1	1SDA073212R1	
				E6.2H 4000 Ekip Dip LSIG	1SDA071233R1	1SDA071863R1	1SDA072583R1	1SDA073213R1	
				E6.2H 4000 Ekip Touch LI	1SDA071234R1	1SDA071864R1	1SDA072584R1	1SDA073214R1	
				E6.2H 4000 Ekip Touch LSI	1SDA071235R1	1SDA071865R1	1SDA072585R1	1SDA073215R1	
				E6.2H 4000 Ekip Touch LSIG	1SDA071236R1	1SDA071866R1	1SDA072586R1	1SDA073216R1	
				E6.2H 4000 Ekip Hi-Touch LSI	1SDA071238R1	1SDA071868R1	1SDA072588R1	1SDA073218R1	
				E6.2H 4000 Ekip Hi-Touch LSIG	1SDA071239R1	1SDA071869R1	1SDA072589R1	1SDA073219R1	
	5000	100	100	E6.2H 5000 Ekip Dip LI	1SDA071261R1	1SDA071891R1	1SDA072611R1	1SDA073241R1	
				E6.2H 5000 Ekip Dip LSI	1SDA071262R1	1SDA071892R1	1SDA072612R1	1SDA073242R1	
				E6.2H 5000 Ekip Dip LSIG	1SDA071263R1	1SDA071893R1	1SDA072613R1	1SDA073243R1	
				E6.2H 5000 Ekip Touch LI	1SDA071264R1	1SDA071894R1	1SDA072614R1	1SDA073244R1	
				E6.2H 5000 Ekip Touch LSI	1SDA071265R1	1SDA071895R1	1SDA072615R1	1SDA073245R1	
				E6.2H 5000 Ekip Touch LSIG	1SDA071266R1	1SDA071896R1	1SDA072616R1	1SDA073246R1	
				E6.2H 5000 Ekip Hi-Touch LSI	1SDA071268R1	1SDA071898R1	1SDA072618R1	1SDA073248R1	
				E6.2H 5000 Ekip Hi-Touch LSIG	1SDA071269R1	1SDA071899R1	1SDA072619R1	1SDA073249R1	
	6300	100	100	E6.2H 6300 Ekip Dip LI	1SDA071291R1	1SDA071921R1	1SDA072641R1	1SDA073271R1	
				E6.2H 6300 Ekip Dip LSI	1SDA071292R1	1SDA071922R1	1SDA072642R1	1SDA073272R1	
				E6.2H 6300 Ekip Dip LSIG	1SDA071293R1	1SDA071923R1	1SDA072643R1	1SDA073273R1	
				E6.2H 6300 Ekip Touch LI	1SDA071294R1	1SDA071924R1	1SDA072644R1	1SDA073274R1	
				E6.2H 6300 Ekip Touch LSI	1SDA071295R1	1SDA071925R1	1SDA072645R1	1SDA073275R1	
				E6.2H 6300 Ekip Touch LSIG	1SDA071296R1	1SDA071926R1	1SDA072646R1	1SDA073276R1	
				E6.2H 6300 Ekip Hi-Touch LSI	1SDA071298R1	1SDA071928R1	1SDA072648R1	1SDA073278R1	
				E6.2H 6300 Ekip Hi-Touch LSIG	1SDA071299R1	1SDA071929R1	1SDA072649R1	1SDA073279R1	
	E6.2V	4000	150	100	E6.2V 4000 Ekip Dip LI	1SDA071241R1	1SDA071871R1	1SDA072591R1	1SDA073221R1
					E6.2V 4000 Ekip Dip LSI	1SDA071242R1	1SDA071872R1	1SDA072592R1	1SDA073222R1
					E6.2V 4000 Ekip Dip LSIG	1SDA071243R1	1SDA071873R1	1SDA072593R1	1SDA073223R1
					E6.2V 4000 Ekip Touch LI	1SDA071244R1	1SDA071874R1	1SDA072594R1	1SDA073224R1
E6.2V 4000 Ekip Touch LSI					1SDA071245R1	1SDA071875R1	1SDA072595R1	1SDA073225R1	
E6.2V 4000 Ekip Touch LSIG					1SDA071246R1	1SDA071876R1	1SDA072596R1	1SDA073226R1	
E6.2V 4000 Ekip Hi-Touch LSI					1SDA071248R1	1SDA071878R1	1SDA072598R1	1SDA073228R1	
E6.2V 4000 Ekip Hi-Touch LSIG					1SDA071249R1	1SDA071879R1	1SDA072599R1	1SDA073229R1	
5000		150	100	E6.2V 5000 Ekip Dip LI	1SDA071271R1	1SDA071901R1	1SDA072621R1	1SDA073251R1	
				E6.2V 5000 Ekip Dip LSI	1SDA071272R1	1SDA071902R1	1SDA072622R1	1SDA073252R1	
				E6.2V 5000 Ekip Dip LSIG	1SDA071273R1	1SDA071903R1	1SDA072623R1	1SDA073253R1	
				E6.2V 5000 Ekip Touch LI	1SDA071274R1	1SDA071904R1	1SDA072624R1	1SDA073254R1	
				E6.2V 5000 Ekip Touch LSI	1SDA071275R1	1SDA071905R1	1SDA072625R1	1SDA073255R1	
				E6.2V 5000 Ekip Touch LSIG	1SDA071276R1	1SDA071906R1	1SDA072626R1	1SDA073256R1	
				E6.2V 5000 Ekip Hi-Touch LSI	1SDA071278R1	1SDA071908R1	1SDA072628R1	1SDA073258R1	
				E6.2V 5000 Ekip Hi-Touch LSIG	1SDA071279R1	1SDA071909R1	1SDA072629R1	1SDA073259R1	
6300		150	100	E6.2V 6300 Ekip Dip LI	1SDA071301R1	1SDA071931R1	1SDA072651R1	1SDA073281R1	
				E6.2V 6300 Ekip Dip LSI	1SDA071302R1	1SDA071932R1	1SDA072652R1	1SDA073282R1	
				E6.2V 6300 Ekip Dip LSIG	1SDA071303R1	1SDA071933R1	1SDA072653R1	1SDA073283R1	
				E6.2V 6300 Ekip Touch LI	1SDA071304R1	1SDA071934R1	1SDA072654R1	1SDA073284R1	
				E6.2V 6300 Ekip Touch LSI	1SDA071305R1	1SDA071935R1	1SDA072655R1	1SDA073285R1	
				E6.2V 6300 Ekip Touch LSIG	1SDA071306R1	1SDA071936R1	1SDA072656R1	1SDA073286R1	
				E6.2V 6300 Ekip Hi-Touch LSI	1SDA071308R1	1SDA071938R1	1SDA072658R1	1SDA073288R1	
				E6.2V 6300 Ekip Hi-Touch LSIG	1SDA071309R1	1SDA071939R1	1SDA072659R1	1SDA073289R1	

Emax 2 power distribution ACBs

Type E6.2X



Emax E6.2X

Size	Iu	Icu (440 V)	Icw (1s)	Type	Product Hierarchy 170009 Order Code			
					Fixed Breaker Rear Connection (HR)		Moving Portion (MP)	
					3 poles	4 poles	3 poles	4 poles
E6.2X	4000	200	120	E6.2X 4000 Ekip Dip LI	1SDA071251R1	1SDA071881R1	1SDA072601R1	1SDA073231R1
				E6.2X 4000 Ekip Dip LSI	1SDA071252R1	1SDA071882R1	1SDA072602R1	1SDA073232R1
				E6.2X 4000 Ekip Dip LSIG	1SDA071253R1	1SDA071883R1	1SDA072603R1	1SDA073233R1
				E6.2X 4000 Ekip Touch LI	1SDA071254R1	1SDA071884R1	1SDA072604R1	1SDA073234R1
				E6.2X 4000 Ekip Touch LSI	1SDA071255R1	1SDA071885R1	1SDA072605R1	1SDA073235R1
				E6.2X 4000 Ekip Touch LSIG	1SDA071256R1	1SDA071886R1	1SDA072606R1	1SDA073236R1
				E6.2X 4000 Ekip Hi-Touch LSI	1SDA071258R1	1SDA071888R1	1SDA072608R1	1SDA073238R1
				E6.2X 4000 Ekip Hi-Touch LSIG	1SDA071259R1	1SDA071889R1	1SDA072609R1	1SDA073239R1
	5000	200	120	E6.2X 5000 Ekip Dip LI	1SDA071281R1	1SDA071911R1	1SDA072631R1	1SDA073261R1
				E6.2X 5000 Ekip Dip LSI	1SDA071282R1	1SDA071912R1	1SDA072632R1	1SDA073262R1
				E6.2X 5000 Ekip Dip LSIG	1SDA071283R1	1SDA071913R1	1SDA072633R1	1SDA073263R1
				E6.2X 5000 Ekip Touch LI	1SDA071284R1	1SDA071914R1	1SDA072634R1	1SDA073264R1
				E6.2X 5000 Ekip Touch LSI	1SDA071285R1	1SDA071915R1	1SDA072635R1	1SDA073265R1
				E6.2X 5000 Ekip Touch LSIG	1SDA071286R1	1SDA071916R1	1SDA072636R1	1SDA073266R1
				E6.2X 5000 Ekip Hi-Touch LSI	1SDA071288R1	1SDA071918R1	1SDA072638R1	1SDA073268R1
				E6.2X 5000 Ekip Hi-Touch LSIG	1SDA071289R1	1SDA071919R1	1SDA072639R1	1SDA073269R1
	6300	200	120	E6.2X 6300 Ekip Dip LI	1SDA071311R1	1SDA071941R1	1SDA072661R1	1SDA073291R1
				E6.2X 6300 Ekip Dip LSI	1SDA071312R1	1SDA071942R1	1SDA072662R1	1SDA073292R1
				E6.2X 6300 Ekip Dip LSIG	1SDA071313R1	1SDA071943R1	1SDA072663R1	1SDA073293R1
				E6.2X 6300 Ekip Touch LI	1SDA071314R1	1SDA071944R1	1SDA072664R1	1SDA073294R1
				E6.2X 6300 Ekip Touch LSI	1SDA071315R1	1SDA071945R1	1SDA072665R1	1SDA073295R1
				E6.2X 6300 Ekip Touch LSIG	1SDA071316R1	1SDA071946R1	1SDA072666R1	1SDA073296R1
				E6.2X 6300 Ekip Hi-Touch LSI	1SDA071318R1	1SDA071948R1	1SDA072668R1	1SDA073298R1
				E6.2X 6300 Ekip Hi-Touch LSIG	1SDA071319R1	1SDA071949R1	1SDA072669R1	1SDA073299R1

Emax 2 power distribution ACBs

Type E6.2H/V/f



Emax E6.2H/f

Size	Iu	Icu (440V)	Icw (1s)	Type Fully Rated 4th Pole	Product Hierarchy 170009 Order Code	
					Fixed Breaker Rear Connection (HR)	Moving Portion (MP)
E6.2H/f	4000	100	100	E6.2H/f 4000 Ekip Dip LI	1SDA071951R1	1SDA073301R1
				E6.2H/f 4000 Ekip Dip LSI	1SDA071952R1	1SDA073302R1
				E6.2H/f 4000 Ekip Dip LSIG	1SDA071953R1	1SDA073303R1
				E6.2H/f 4000 Ekip Touch LI	1SDA071954R1	1SDA073304R1
				E6.2H/f 4000 Ekip Touch LSI	1SDA071955R1	1SDA073305R1
				E6.2H/f 4000 Ekip Touch LSIG	1SDA071956R1	1SDA073306R1
				E6.2H/f 4000 Ekip Hi-Touch LSI	1SDA071958R1	1SDA073308R1
				E6.2H/f 4000 Ekip Hi-Touch LSIG	1SDA071959R1	1SDA073309R1
	5000	100	100	E6.2H/f 5000 Ekip Dip LI	1SDA071981R1	1SDA073331R1
				E6.2H/f 5000 Ekip Dip LSI	1SDA071982R1	1SDA073332R1
				E6.2H/f 5000 Ekip Dip LSIG	1SDA071983R1	1SDA073333R1
				E6.2H/f 5000 Ekip Touch LI	1SDA071984R1	1SDA073334R1
				E6.2H/f 5000 Ekip Touch LSI	1SDA071985R1	1SDA073335R1
				E6.2H/f 5000 Ekip Touch LSIG	1SDA071986R1	1SDA073336R1
				E6.2H/f 5000 Ekip Hi-Touch LSI	1SDA071988R1	1SDA073338R1
				E6.2H/f 5000 Ekip Hi-Touch LSIG	1SDA071989R1	1SDA073339R1
	6300	100	100	E6.2H/f 6300 Ekip Dip LI	1SDA072011R1	1SDA073361R1
				E6.2H/f 6300 Ekip Dip LSI	1SDA072012R1	1SDA073362R1
				E6.2H/f 6300 Ekip Dip LSIG	1SDA072013R1	1SDA073363R1
				E6.2H/f 6300 Ekip Touch LI	1SDA072014R1	1SDA073364R1
				E6.2H/f 6300 Ekip Touch LSI	1SDA072015R1	1SDA073365R1
				E6.2H/f 6300 Ekip Touch LSIG	1SDA072016R1	1SDA073366R1
				E6.2H/f 6300 Ekip Hi-Touch LSI	1SDA072018R1	1SDA073368R1
				E6.2H/f 6300 Ekip Hi-Touch LSIG	1SDA072019R1	1SDA073369R1
E6.2V/f	4000	150	100	E6.2V/f 4000 Ekip Dip LI	1SDA071961R1	1SDA073311R1
				E6.2V/f 4000 Ekip Dip LSI	1SDA071962R1	1SDA073312R1
				E6.2V/f 4000 Ekip Dip LSIG	1SDA071963R1	1SDA073313R1
				E6.2V/f 4000 Ekip Touch LI	1SDA071964R1	1SDA073314R1
				E6.2V/f 4000 Ekip Touch LSI	1SDA071965R1	1SDA073315R1
				E6.2V/f 4000 Ekip Touch LSIG	1SDA071966R1	1SDA073316R1
				E6.2V/f 4000 Ekip Hi-Touch LSI	1SDA071968R1	1SDA073318R1
				E6.2V/f 4000 Ekip Hi-Touch LSIG	1SDA071969R1	1SDA073319R1
	5000	150	100	E6.2V/f 5000 Ekip Dip LI	1SDA071991R1	1SDA073341R1
				E6.2V/f 5000 Ekip Dip LSI	1SDA071992R1	1SDA073342R1
				E6.2V/f 5000 Ekip Dip LSIG	1SDA071993R1	1SDA073343R1
				E6.2V/f 5000 Ekip Touch LI	1SDA071994R1	1SDA073344R1
				E6.2V/f 5000 Ekip Touch LSI	1SDA071995R1	1SDA073345R1
				E6.2V/f 5000 Ekip Touch LSIG	1SDA071996R1	1SDA073346R1
				E6.2V/f 5000 Ekip Hi-Touch LSI	1SDA071998R1	1SDA073348R1
				E6.2V/f 5000 Ekip Hi-Touch LSIG	1SDA071999R1	1SDA073349R1
	6300	150	100	E6.2V/f 6300 Ekip Dip LI	1SDA072021R1	1SDA073371R1
				E6.2V/f 6300 Ekip Dip LSI	1SDA072022R1	1SDA073372R1
				E6.2V/f 6300 Ekip Dip LSIG	1SDA072023R1	1SDA073373R1
				E6.2V/f 6300 Ekip Touch LI	1SDA072024R1	1SDA073374R1
				E6.2V/f 6300 Ekip Touch LSI	1SDA072025R1	1SDA073375R1
				E6.2V/f 6300 Ekip Touch LSIG	1SDA072026R1	1SDA073376R1
				E6.2V/f 6300 Ekip Hi-Touch LSI	1SDA072028R1	1SDA073378R1
				E6.2V/f 6300 Ekip Hi-Touch LSIG	1SDA072029R1	1SDA073379R1

Emax 2 power distribution ACBs

Type E6.2X/f



Emax E6.2X/f

Size	Iu	Icu (440V)	Icw (1s)	Type Fully Rated 4th Pole	Product Hierarchy 170009 Order Code	
					Fixed Breaker Rear Connection (HR)	Moving Portion (MP)
E6.2X/f	4000	200	120	E6.2X/f 4000 Ekip Dip LI	1SDA071971R1	1SDA073321R1
				E6.2X/f 4000 Ekip Dip LSI	1SDA071972R1	1SDA073322R1
				E6.2X/f 4000 Ekip Dip LSIG	1SDA071973R1	1SDA073323R1
				E6.2X/f 4000 Ekip Touch LI	1SDA071974R1	1SDA073324R1
				E6.2X/f 4000 Ekip Touch LSI	1SDA071975R1	1SDA073325R1
				E6.2X/f 4000 Ekip Touch LSIG	1SDA071976R1	1SDA073326R1
				E6.2X/f 4000 Ekip Hi-Touch LSI	1SDA071978R1	1SDA073328R1
				E6.2X/f 4000 Ekip Hi-Touch LSIG	1SDA071979R1	1SDA073329R1
	5000	200	120	E6.2X/f 5000 Ekip Dip LI	1SDA072001R1	1SDA073351R1
				E6.2X/f 5000 Ekip Dip LSI	1SDA072002R1	1SDA073352R1
				E6.2X/f 5000 Ekip Dip LSIG	1SDA072003R1	1SDA073353R1
				E6.2X/f 5000 Ekip Touch LI	1SDA072004R1	1SDA073354R1
				E6.2X/f 5000 Ekip Touch LSI	1SDA072005R1	1SDA073355R1
				E6.2X/f 5000 Ekip Touch LSIG	1SDA072006R1	1SDA073356R1
6300	200	120	E6.2X/f 6300 Ekip Dip LI	1SDA072031R1	1SDA073381R1	
			E6.2X/f 6300 Ekip Dip LSI	1SDA072032R1	1SDA073382R1	
			E6.2X/f 6300 Ekip Dip LSIG	1SDA072033R1	1SDA073383R1	
			E6.2X/f 6300 Ekip Touch LI	1SDA072034R1	1SDA073384R1	
			E6.2X/f 6300 Ekip Touch LSI	1SDA072035R1	1SDA073385R1	
			E6.2X/f 6300 Ekip Touch LSIG	1SDA072036R1	1SDA073386R1	
			E6.2X/f 6300 Ekip Hi-Touch LSI	1SDA072038R1	1SDA073388R1	
			E6.2X/f 6300 Ekip Hi-Touch LSIG	1SDA072039R1	1SDA073389R1	

Switch disconnectors

Type E1 & E2



Emax E1.2B-N/MS

Product Hierarchy 170009 Order Code

Size	lu	Icw (1s)	Type	Fixed Breaker Rear Connection (HR)		Moving Portion (MP)	
				3 poles	4 poles	3 poles	4 poles
E1.2B/MS	630	42	E1.2B/MS 630	1SDA073392R1	1SDA073431R1	1SDA073476R1	1SDA073515R1
	800	42	E1.2B/MS 800	1SDA073394R1	1SDA073433R1	1SDA073478R1	1SDA073517R1
	1000	42	E1.2B/MS 1000	1SDA073396R1	1SDA073435R1	1SDA073480R1	1SDA073519R1
	1250	42	E1.2B/MS 1250	1SDA073398R1	1SDA073437R1	1SDA073482R1	1SDA073521R1
	1600	42	E1.2B/MS 1600	1SDA073400R1	1SDA073439R1	1SDA073484R1	1SDA073523R1
E1.2N/MS	250	50	E1.2N/MS 250	1SDA073391R1	1SDA073430R1	1SDA073475R1	1SDA073514R1
	630	50	E1.2N/MS 630	1SDA073393R1	1SDA073432R1	1SDA073477R1	1SDA073516R1
	800	50	E1.2N/MS 800	1SDA073395R1	1SDA073434R1	1SDA073479R1	1SDA073518R1
	1000	50	E1.2N/MS 1000	1SDA073397R1	1SDA073436R1	1SDA073481R1	1SDA073520R1
	1250	50	E1.2N/MS 1250	1SDA073399R1	1SDA073438R1	1SDA073483R1	1SDA073522R1
	1600	50	E1.2N/MS 1600	1SDA073401R1	1SDA073440R1	1SDA073485R1	1SDA073524R1

E2.2B-N-H/MS

E2.2B/MS	1600	42	E2.2B/MS 1600	1SDA073408R1	1SDA073447R1	1SDA073492R1	1SDA073531R1
	2000	42	E2.2B/MS 2000	1SDA073411R1	1SDA073450R1	1SDA073495R1	1SDA073534R1
E2.2N/MS	800	66	E2.2N/MS 800	1SDA073402R1	1SDA073441R1	1SDA073486R1	1SDA073525R1
	1000	66	E2.2N/MS 1000	1SDA073404R1	1SDA073443R1	1SDA073488R1	1SDA073527R1
	1250	66	E2.2N/MS 1250	1SDA073406R1	1SDA073445R1	1SDA073490R1	1SDA073529R1
	1600	66	E2.2N/MS 1600	1SDA073409R1	1SDA073448R1	1SDA073493R1	1SDA073532R1
	2000	66	E2.2N/MS 2000	1SDA073412R1	1SDA073451R1	1SDA073496R1	1SDA073535R1
	2500	66	E2.2N/MS 2500	1SDA073414R1	1SDA073453R1	1SDA073498R1	1SDA073537R1
E2.2H/MS	800	85	E2.2H/MS 800	1SDA073403R1	1SDA073442R1	1SDA073487R1	1SDA073526R1
	1000	85	E2.2H/MS 1000	1SDA073405R1	1SDA073444R1	1SDA073489R1	1SDA073528R1
	1250	85	E2.2H/MS 1250	1SDA073407R1	1SDA073446R1	1SDA073491R1	1SDA073530R1
	1600	85	E2.2H/MS 1600	1SDA073410R1	1SDA073449R1	1SDA073494R1	1SDA073533R1
	2000	85	E2.2H/MS 2000	1SDA073413R1	1SDA073452R1	1SDA073497R1	1SDA073536R1
	2500	85	E2.2H/MS 2500	1SDA073415R1	1SDA073454R1	1SDA073499R1	1SDA073538R1

Switch disconnectors

Type E4 & E6



Emax E4.2N-H-V

Product Hierarchy 1700009 Order Code

Size	lu	Icw (1s)	Type	Fixed Breaker Rear Connection (HR)		Moving Portion (MP)	
				3 poles	4 poles	3 poles	4 poles
E4.2N/MS	3200	66	E4.2N/MS 3200	1SDA073418R1	1SDA073457R1	1SDA073502R1	1SDA073541R1
	4000	66	E4.2N/MS 4000	1SDA073421R1	1SDA073460R1	1SDA073505R1	1SDA073544R1
E4.2H/MS	3200	85	E4.2H/MS 3200	1SDA073419R1	1SDA073458R1	1SDA073503R1	1SDA073542R1
	4000	85	E4.2H/MS 4000	1SDA073422R1	1SDA073461R1	1SDA073506R1	1SDA073545R1
E4.2V/MS	2000	100	E4.2V/MS 2000	1SDA073416R1	1SDA073455R1	1SDA073500R1	1SDA073539R1
	2500	100	E4.2V/MS 2500	1SDA073417R1	1SDA073456R1	1SDA073501R1	1SDA073540R1
	3200	100	E4.2V/MS 3200	1SDA073420R1	1SDA073459R1	1SDA073504R1	1SDA073543R1
	4000	100	E4.2V/MS 4000	1SDA073423R1	1SDA073462R1	1SDA073507R1	1SDA073546R1

Emax E6.2H-X/MS

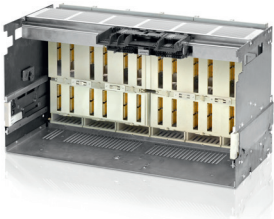
E6.2H/MS	4000	100	E6.2H/MS 4000	1SDA073424R1	1SDA073463R1	1SDA073508R1	1SDA073547R1
	5000	100	E6.2H/MS 5000	1SDA073426R1	1SDA073465R1	1SDA073510R1	1SDA073549R1
	6300	100	E6.2H/MS 6300	1SDA073428R1	1SDA073467R1	1SDA073512R1	1SDA073551R1
E6.2X/MS	4000	120	E6.2X/MS 4000	1SDA073425R1	1SDA073464R1	1SDA073509R1	1SDA073548R1
	5000	120	E6.2X/MS 5000	1SDA073427R1	1SDA073466R1	1SDA073511R1	1SDA073550R1
	6300	120	E6.2X/MS 6300	1SDA073429R1	1SDA073468R1	1SDA073513R1	1SDA073552R1

Emax E6.2H-X/MS/f Full size

Size	lu	Icw (1s)	Type Fully Rated 4th Pole	Product Hierarchy 1700009 Order Code	
				Fixed Breaker Rear Connection (HR)	Moving Portion (MP)
E6.2H/MS/f	4000	100	E6.2H/MS/f 4000	1SDA073469R1	1SDA073553R1
	5000	100	E6.2H/MS/f 5000	1SDA073471R1	1SDA073555R1
	6300	100	E6.2H/MS/f 6300	1SDA073473R1	1SDA073557R1
E6.2X/MS/f	4000	120	E6.2X/MS/f 4000	1SDA073470R1	1SDA073554R1
	5000	120	E6.2X/MS/f 5000	1SDA073472R1	1SDA073556R1
	6300	120	E6.2X/MS/f 6300	1SDA073474R1	1SDA073558R1

Emax 2 power distribution ACBs

Fixed parts



Size	Performance	Iu	Type of terminal	Type	Product Hierarchy 2900004 Order Code	
					3 pole	4 pole
E1.2	B, C, N, L	1600	HR - HR	E1.2 W FP Iu=1600 HR HR	1SDA073907R1	1SDA073908R1
E2.2	B, N, S, H	2000	HR - HR	E2.2 W FP Iu=2000 HR HR	1SDA073909R1	1SDA073910R1
E2.2	N, S, H	2500	HR - HR	E2.2 W FP Iu=2500 HR HR	1SDA073911R1	1SDA073912R1
E4.2	N, S, H	3200	HR - HR	E4.2 W FP Iu=3200 HR HR	1SDA073913R1	1SDA073914R1
E4.2	N, S, H, V	4000	HR - HR	E4.2 W FP Iu=4000 ou version V HR HR	1SDA073915R1	1SDA073916R1
E6.2	H, V	5000	HR - HR	E6.2 W FP Iu=5000 HR HR	1SDA073917R1	1SDA073918R1
E6.2/f	H, V	5000	HR - HR	E6.2 W FP Iu=5000 HR HR		1SDA073919R1
E6.2	H, V, X	6300	HR - HR	E6.2X W FP Iu=6300 ou X HR HR version	1SDA073920R1	1SDA073921R1
E6.2/f	H, V, X	6300	HR - HR	E6.2 W FP Iu=6300 ou X HR HR version		1SDA073922R1

Emax 2 power distribution ACBs

Electrical accessories



First and second opening release - YO

Size	Type	Product Hierarchy 2900004 Order Code
E1.2..E6.2	YO E1.2..E6.2 24V AC/DC	1SDA073668R1
E1.2..E6.2	YO E1.2..E6.2 30V AC/DC	1SDA073669R1
E1.2..E6.2	YO E1.2..E6.2 48V AC/DC	1SDA073670R1
E1.2..E6.2	YO E1.2..E6.2 60V AC/DC	1SDA073671R1
E1.2..E6.2	YO E1.2..E6.2 110-120V AC/DC	1SDA073672R1
E1.2..E6.2	YO E1.2..E6.2 120-127V AC/DC	1SDA073673R1
E1.2..E6.2	YO E1.2..E6.2 220-240V AC/DC	1SDA073674R1
E1.2..E6.2	YO E1.2..E6.2 240-250V AC/DC	1SDA073675R1
E1.2..E6.2	YO E1.2..E6.2 380-400V AC	1SDA073677R1
E1.2..E6.2	YO E1.2..E6.2 415-440V AC	1SDA073678R1
E1.2..E6.2	YO E1.2..E6.2 480-500V AC	1SDA073679R1
E1.2..E6.2	YO E1.2..E6.2 500-550V AC	1SDA073680R1

First and second opening release - YC

E1.2..E6.2	YC E1.2..E6.2 24V AC/DC	1SDA073681R1
E1.2..E6.2	YC E1.2..E6.2 30V AC/DC	1SDA073682R1
E1.2..E6.2	YC E1.2..E6.2 48V AC/DC	1SDA073683R1
E1.2..E6.2	YC E1.2..E6.2 60V AC/DC	1SDA073684R1
E1.2..E6.2	YC E1.2..E6.2 110-120V AC/DC	1SDA073685R1
E1.2..E6.2	YC E1.2..E6.2 120-127V AC/DC	1SDA073686R1
E1.2..E6.2	YC E1.2..E6.2 220-240V AC/DC	1SDA073687R1
E1.2..E6.2	YC E1.2..E6.2 240-250V AC/DC	1SDA073688R1
E1.2..E6.2	YC E1.2..E6.2 380-400V AC	1SDA073690R1
E1.2..E6.2	YC E1.2..E6.2 415-440V AC	1SDA073691R1
E1.2..E6.2	YC E1.2..E6.2 480-500V AC	1SDA073692R1
E1.2..E6.2	YC E1.2..E6.2 500-550V AC	1SDA073693R1

YO/YC test unit

E1.2...E6.2	YO/YC test unit E1.2...E6.2	1SDA073707R1
-------------	-----------------------------	--------------

Undervoltage release - YU

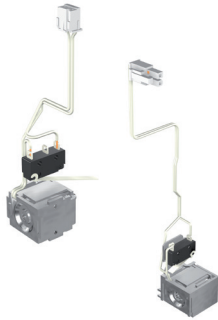
E1.2..E6.2	YU E1.2..E6.2 24V AC/DC	1SDA073694R1
E1.2..E6.2	YU E1.2..E6.2 30V AC/DC	1SDA073695R1
E1.2..E6.2	YU E1.2..E6.2 48V AC/DC	1SDA073696R1
E1.2..E6.2	YU E1.2..E6.2 60V AC/DC	1SDA073697R1
E1.2..E6.2	YU E1.2..E6.2 110-120V AC/DC	1SDA073698R1
E1.2..E6.2	YU E1.2..E6.2 120-127V AC/DC	1SDA073699R1
E1.2..E6.2	YU E1.2..E6.2 220-240V AC/DC	1SDA073700R1
E1.2..E6.2	YU E1.2..E6.2 240-250V AC/DC	1SDA073701R1
E1.2..E6.2	YU E1.2..E6.2 380-400V AC	1SDA073703R1
E1.2..E6.2	YU E1.2..E6.2 415-440V AC	1SDA073704R1
E1.2..E6.2	YU E1.2..E6.2 480-500V AC	1SDA073705R1
E1.2..E6.2	YU E1.2..E6.2 500-550V AC	1SDA073706R1

Electronic time-delay device for undervoltage release - UVD

E1.2...E6.2	24...30V DC	1SDA074623R1
E1.2...E6.2	48V AC/DC	1SDA074624R1
E1.2...E6.2	60V AC/DC	1SDA074625R1
E1.2...E6.2	110...127V AC/DC	1SDA074626R1
E1.2...E6.2	220...250V AC/DC	1SDA074627R1

Emax 2 power distribution ACBs

Electrical accessories



Remote Reset - YR

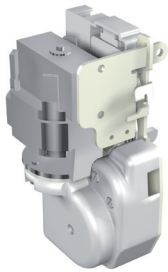
Size	Type	Product Hierarchy 2900004 Order Code
E1.2	YR 24V DC E1.2	1SDA073744R1
E1.2	YR 110V AC/DC E1.2	1SDA073745R1
E1.2	YR 250V AC/DC E1.2	1SDA073746R1
E2.2...E6.2	YR 24V AC/DC E2.2...E6.2	1SDA073747R1
E2.2...E6.2	YR 110V AC/DC E2.2...E6.2 *	1SDA073748R1
E2.2...E6.2	YR 220V AC/DC E2.2...E6.2*	1SDA073749R1

* when YR is used in DC, the activation of YR must be done with a maximum impulse time of 50ms. The YR cannot be powered permanently.



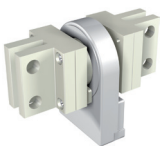
Motor - M

E1.2	M E1.2 24-30V AC/DC	1SDA073708R1
E1.2	M E1.2 48-60V AC/DC	1SDA073709R1
E1.2	M E1.2 100-130V AC/DC	1SDA073710R1
E1.2	M E1.2 220-250V AC/DC	1SDA073711R1
E1.2	M E1.2 380-415V AC	1SDA073713R1
E2.2...E6.2	M E2.2...E6.2 24-30V AC/DC	1SDA073722R1
E2.2...E6.2	M E2.2...E6.2 48-60V AC/DC	1SDA073723R1
E2.2...E6.2	M E2.2...E6.2 100-130V AC/DC	1SDA073724R1
E2.2...E6.2	M E2.2...E6.2 220-250V AC/DC	1SDA073725R1
E2.2...E6.2	M E2.2...E6.2 380-415V AC	1SDA073727R1
E2.2...E6.2	M E2.2...E6.2 440-480V AC	1SDA073728R1
E1.2	M E1.2 24-30V AC/DC + S33 M/2 24V DC	1SDA073715R1
E1.2	M E1.2 48-60V AC/DC + S33 M/2 24V DC	1SDA073716R1
E1.2	M E1.2 100-130V AC/DC + S33 M/2 24V DC	1SDA073717R1
E1.2	M E1.2 220-250V AC/DC + S33 M/2 24V DC	1SDA073718R1
E1.2	M E1.2 380-415V AC + S33 M/2 24V DC	1SDA073720R1
E2.2...E6.2	M E2.2...E6.2 24-30V AC/DC + S33 M/2 24V DC	1SDA073729R1
E2.2...E6.2	M E2.2...E6.2 48-60V AC/DC + S33 M/2 24V DC	1SDA073730R1
E2.2...E6.2	M E2.2...E6.2 100-130V AC/DC + S33 M/2 24V DC	1SDA073731R1
E2.2...E6.2	M E2.2...E6.2 220-250V AC/DC + S33 M/2 24V DC	1SDA073732R1
E2.2...E6.2	M E2.2...E6.2 380-415V AC + S33 M/2 24V DC	1SDA073734R1
E2.2...E6.2	M E2.2...E6.2 440-480V AC + S33 M/2 24V DC	1SDA073735R1



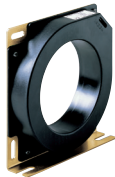
Current sensor for neutral conductor outside the circuit-breaker

E1.2	Ext CS N E1.2 E2.2 2000A	1SDA073736R1
E2.2	Ext CS N E2.2 2500A	1SDA073737R1
E4.2	Ext CS N E4.2 3200A	1SDA073738R1
E6.2	Ext CS N E4.2 4000A E6.2 50%	1SDA073739R1
E6.2	Ext CS N E6.2	1SDA073740R1



Homopolar toroid for the earthing conductor of main power supply

E1.2..E6.2	Homopolar toroid E1.2 ... E6.2	1SDA073743R1
------------	--------------------------------	--------------



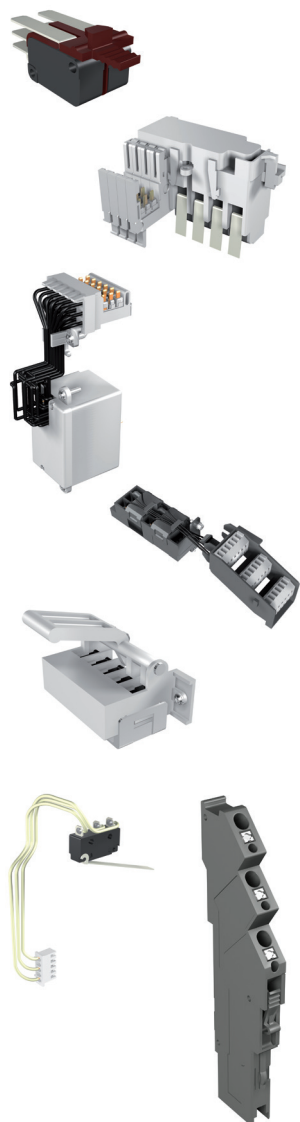
Toroid for differential protection

E1.2 - E2.2 3p	Toroid RC E1.2, E2.2 3p	1SDA073741R1
E2.2 4p - E4.2	Toroid RC E2.2 4p, E4.2	1SDA073742R1



Emax 2 power distribution ACBs

Electrical accessories



Open/closed auxiliary contacts - AUX

Taille	Type	Product Hierarchy 2900004 Order Code
E1.2	AUX 4Q 400V E1.2	1SDA073750R1
E1.2	AUX 4Q 24V E1.2	1SDA073751R1
E1.2	AUX 2Q 400V + 2Q 24V E1.2	1SDA073752R1
E2.2...E6.2	AUX 4Q 400V E2.2...E6.2	1SDA073753R1
E2.2...E6.2	AUX 4Q 24V E2.2...E6.2	1SDA073754R1
E2.2...E6.2	AUX 2Q 400V + 2Q 24V E2.2...E6.2	1SDA073755R1
E2.2...E6.2	AUX 6Q 400V E2.2...E6.2	1SDA073756R1
E2.2...E6.2	AUX 6Q 24V E2.2...E6.2	1SDA073757R1
E2.2...E6.2	AUX 3Q 400V AC + 3Q 24V DC E2.2...E6.2	1SDA075973R1
E1.2	AUX 15Q 400V E1.2 *	1SDA073758R1
E1.2	AUX 15Q 24V E1.2 *	1SDA073759R1
E2.2...E6.2	AUX 15Q 400V (for fixed/withdrawable with signalling in racked in) E2.2...E6.2 *	1SDA073760R1
E2.2...E6.2	AUX 15Q 24V (for fixed/withdrawable with signalling in racked in) E2.2...E6.2 *	1SDA073761R1
E2.2...E6.2	AUX 15Q 400V (for fixed/withdrawable with signalling in racked in/test isolated) E2.2...E6.2 *	1SDA073846R1
E2.2...E6.2	AUX 15Q 24V (for fixes /débrochables avec signalization de embroché/essai) E2.2...E6.2 *	1SDA073847R1

* not compatible with mechanical locks on compartment doors or mechanical interlocks.

For E1.2 you need to order also one of the following items:

Plate for fixed	1SDA062129R1
Plate for fixed - on bottom	1SDA062130R1
Plate for withdrawable	1SDA062131R1

Auxiliary position contacts - AUP

Size	Type	Product Hierarchy 2900004 Order Code
E1.2	AUP 6 contacts 400V E1.2	1SDA073762R1
E1.2	AUP 6 contacts 24V E1.2	1SDA073763R1
E2.2...E6.2	AUP 5 contacts 400V E2.2...E6.2 - côté gauche	1SDA073764R1
E2.2...E6.2	AUP 5 contacts 24V E2.2...E6.2 - côté gauche	1SDA073765R1
E2.2...E6.2	AUP 5 suppl. contacts 400V E2.2...E6.2 - côté droite	1SDA073766R1
E2.2...E6.2	AUP 5 suppl. contacts 24V E2.2...E6.2 - côté droite	1SDA073767R1
E1.2...E6.2	AUX 15Q 24V (for fixed/withdrawable with signalling in racked in/test isolated) E2.2...E6.2 *	1SDA073768R1

Ready to close signalling contact-RTC

E1.2	RTC 250V E1.2	1SDA073770R1
E1.2	RTC 24V E1.2	1SDA073771R1
E1.2	RTC Ekip 24V E1.2	1SDA073772R1
E2.2...E6.2	RTC 250V E2.2...E6.2	1SDA073773R1
E2.2...E6.2	RTC 24V E2.2...E6.2	1SDA073774R1
E2.2...E6.2	RTC Ekip 24V E2.2...E6.2	1SDA073775R1

Contact signalling tripping of Ekip protection trip unit - S51

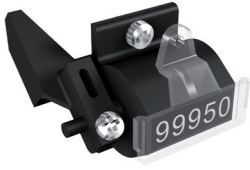
E1.2	S51 250V E1.2	1SDA073776R1
E1.2	S51 24V E1.2	1SDA073777R1
E2.2...E6.2	S51 250V E2.2...E6.2	1SDA073778R1
E2.2...E6.2	S51 24V E2.2...E6.2	1SDA073779R1

Terminals for auxiliary connection

E1.2...E6.2	Prices 10 pieces	1SDA073906R1
-------------	------------------	--------------

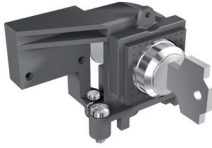
Emax 2 power distribution ACBs

Mechanical accessories



Mechanical operation counter - MOC

Size	Type	Product Hierarchy 2900004 Order Code
E1.2	MOC Mechanical operation counter	1SDA073780R1
E2.2...E6.2	MOC Mechanical operation counter	1SDA073781R1



Key lock in open position - KLC

E1.2	E1.2 KLC-D BI. Key lock open E1.2	1SDA073782R1
E1.2	E1.2 KLC-S BI. Key lock open N.20005 E1.2	1SDA073783R1
E1.2	E1.2 KLC-S BI. Key lock open N.20006 E1.2	1SDA073784R1
E1.2	E1.2 KLC-S BI. Key lock open N.20007 E1.2	1SDA073785R1
E1.2	E1.2 KLC-S BI. Key lock open N.20008 E1.2	1SDA073786R1
E1.2	E1.2 KLC-S BI. Key lock open N.20009 E1.2	1SDA073787R1
E1.2	E1.2 KLA BI. Castell key lock open E1.2	1SDA073788R1
E1.2	E1.2 KLA BI. Kirk key lock open E1.2	1SDA073789R1
E1.2	E1.2 KLA BI. Ronis Profalux key lock open	1SDA073790R1
E2.2...E6.2	E2.2...E6.2 KLC-D BI. Key lock open E2.2...E6.2	1SDA073791R1
E2.2...E6.2	E2.2...E6.2 KLC-S BI. key lock AP N.20005 E2.2...E6.2	1SDA073792R1
E2.2...E6.2	E2.2...E6.2 KLC-S BI. key lock AP N.20006 E2.2...E6.2	1SDA073793R1
E2.2...E6.2	E2.2...E6.2 KLC-S BI. key lock AP N.20007 E2.2...E6.2	1SDA073794R1
E2.2...E6.2	E2.2...E6.2 KLC-S BI. key lock AP N.20008 E2.2...E6.2	1SDA073795R1
E2.2...E6.2	E2.2...E6.2 KLC-S BI. key lock AP N.20009 E2.2...E6.2 1	1SDA073796R1
E2.2...E6.2	E2.2...E6.2 KLA BI. Castell key lock open E2.2...E6.2	1SDA073797R1
E2.2...E6.2	KLA BI. Kirk key lock open E2.2...E6.2	1SDA073798R1
E2.2...E6.2	KLA BI. Ronis Profalux key lock open E2.2...E6.2	1SDA073799R1



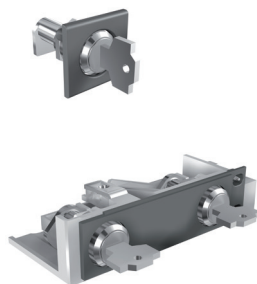
Padlocks in open position - PLC

E1.2	PLC E1.2 BI. Padlocks in open position D=4mm	1SDA073800R1
E1.2	PLC E1.2 BI. Padlocks in open position D=7mm	1SDA073801R1
E1.2	PLC E1.2 BI. Padlocks in open position D=8mm	1SDA073802R1
E2.2...E6.2	PLC E2.2...E6.2 BI. Padlocks in open position D=4mm	1SDA073803R1
E2.2...E6.2	PLC E2.2...E6.2 BI. Padlocks in open position D=7mm	1SDA073804R1
E2.2...E6.2	PLC E2.2...E6.2 BI. Padlocks in open position D=8mm	1SDA073805R1



Emax 2 power distribution ACBs

Mechanical accessories



Key lock in racked-in / test / racked-out position- KLP

Size	Type	Product Hierarchy 2900004 Order Code
E1.2	KLC-D Racked in/out E1.2 - 1st key	1SDA073822R1
E1.2	KLP-S Racked in/out N.20005 E1.2 - 1st key	1SDA073823R1
E1.2	KLP-S Racked in/out N.20006 E1.2 - 1st key	1SDA073824R1
E1.2	KLP-S Racked in/out N.20007 E1.2 - 1st key	1SDA073825R1
E1.2	KLP-S Racked in/out N.20008 E1.2 - 1st key	1SDA073826R1
E1.2	KLP-S Racked in/out N.20009 E1.2 - 1st key	1SDA073827R1
E1.2	KLP-D Racked in/out E1.2 - 2nd key	1SDA073828R1
E1.2	KLP-S Racked in/out N.20005 E1.2 - 2nd key	1SDA073829R1
E1.2	KLP-S Racked in/out N.20006 E1.2 - 2nd key	1SDA073830R1
E1.2	KLP-S Racked in/out N.20007 E1.2 - 2nd key	1SDA073831R1
E1.2	KLP-S Racked in/out N.20008 E1.2 - 2nd key	1SDA073832R1
E1.2	KLP-S Racked in/out N.20009 E1.2 - 2nd key	1SDA073833R1
E1.2	KLP-A Racked in/out RonProf Kirk E1.2 - 1st key	1SDA073834R1
E1.2	KLP-A Racked in/out RonProf Kirk E1.2 - 2nd key	1SDA073835R1
E1.2	KLP-A Racked in/out Castell E1.2 - 1st key	1SDA073836R1
E1.2	KLP-A Racked in/out Castell E1.2 - 2nd key	1SDA073837R1
E2.2...E6.2	KLP-D Racked in/out E2.2...E6.2 - 1st key	1SDA073806R1
E2.2...E6.2	KLP-S Racked in/out N.20005 E2.2...E6.2 - 1st key	1SDA073807R1
E2.2...E6.2	KLP-S Racked in/out N.20006 E2.2...E6.2 - 1st key	1SDA073808R1
E2.2...E6.2	KLP-S Racked in/out N.20007 E2.2...E6.2 - 1st key	1SDA073809R1
E2.2...E6.2	KLP-S Racked in/out N.20008 E2.2...E6.2 - 1st key	1SDA073810R1
E2.2...E6.2	KLP-S Racked in/out N.20009 E2.2...E6.2 - 1st key	1SDA073811R1
E2.2...E6.2	KLP-D Racked in/out E2.2...E6.2 - 2nd key	1SDA073812R1
E2.2...E6.2	KLP-S Racked in/out N.20005 E2.2...E6.2 - 2nd key	1SDA073813R1
E2.2...E6.2	KLP-S Racked in/out N.20006 E2.2...E6.2 - 2nd key	1SDA073814R1
E2.2...E6.2	KLP-S Racked in/out N.20007 E2.2...E6.2 - 2nd key	1SDA073815R1
E2.2...E6.2	KLP-S Racked in/out N.20008 E2.2...E6.2 - 2nd key	1SDA073816R1
E2.2...E6.2	KLP-S Racked in/out N.20009 E2.2...E6.2 - 2nd key	1SDA073817R1
E2.2...E6.2	KLP-A Racked in/out RoProKirk E2.2...E6.2 - 1st key	1SDA073818R1
E2.2...E6.2	KLP-A Racked in/out RoProKirk E2.2...E6.2 - 2nd key	1SDA073819R1
E2.2...E6.2	KLP-A Racked in/out Castell E2.2...E6.2E1.2 - 1st key	1SDA073820R1
E2.2...E6.2	KLP-A Racked in/out Castell E2.2...E6.2 - 2nd key	1SDA073821R1

When the PLP is already present, you have to order the KLP 2nd key and not the KLP 1st key

Accessory for supplementary lock in racked-out position



E1.2	Suppl. locks in racked-out E1.2	1SDA073838R1
E2.2...E6.2	Suppl. locks in racked-out E2.2...E6.2	1SDA073839R1

Padlock in racked-in / test / racked-out position - PLP

E1.2	PLP Bl. padlocks Racked in/out D=4/6/8mm E1.2	1SDA073840R1
E2.2...E6.2	PLP Bl. padlocks Racked in/out D=4/6/8mm E2.2...E6.2	1SDA073841R1



External shutter lock- SLE

E2.2	SLE Bl. shutter lock D=4/6/8mm E2.2	1SDA073842R1
E4.2	SLE Bl. shutter lock D=4/6/8mm E4.2	1SDA073843R1
E6.2	SLE Bl. shutter lock D=4/6/8mm E6.2	1SDA073844R1

Emax 2 power distribution ACBs

Mechanical accessories



Key lock in racked-in / test / racked-out position- KLP

Size	Type	Product Hierarchy 2900004 Order Code
E2.2...E6.2	DLR E2.2...E6.2	1SDA073845R1

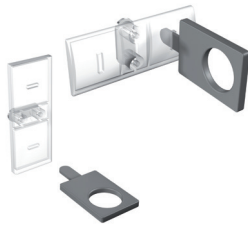


Lock to prevent door opening when circuit-breaker is in racked-in / test position - DLP

E2.2...E6.2	DLP E2.2...E6.2	1SDA073849R1
-------------	-----------------	--------------

Lock to prevent door opening when circuit-breaker is in closed position - DLC

E1.2	DLC Interlock cable door cable E1.2	1SDA073850R1
E1.2	DLC Interlock direct door E1.2	1SDA073851R1
E2.2...E6.2	DLC Interlock cable door cable E2.2...E6.2	1SDA073852R1
E2.2...E6.2	LC Interlock direct door E2.2...E6.2	1SDA073853R1



Protection device for opening and closing pushbuttons - PBC

E1.2	PPBC Prot. Pushbuttons AP/CH E1.2	1SDA073854R1
E1.2	PPBC Prot. Pushbuttons AP/CH D=4mm E1.2	1SDA073855R1
E1.2	PPBC Prot. Pushbuttons AP/CH D=7mm E1.2	1SDA073856R1
E1.2	PPBC Prot. Pushbuttons AP/CH D=8mm E1.2	1SDA073857R1
E2.2...E6.2	PPBC Prot. Pushbuttons AP/CH E2.2...E6.2	1SDA073858R1
E2.2...E6.2	PPBC Prot. Pushbuttons AP/CH D=4mm E2.2...E6.2	1SDA073859R1
E2.2...E6.2	PPBC Prot. Pushbuttons AP/CH D=7mm E2.2...E6.2	1SDA073860R1
E2.2...E6.2	PPBC Prot. Pushbuttons AP/CH D=8mm E2.2...E6.2	1SDA073861R1



Circuit-breaker flange

E1.2	IP30 Flange E1.2 F	1SDA073862R1
E1.2	IP30 Flange E1.2 W	1SDA073863R1
E2.2...E6.2	IP30 Flange E2.2...E6.2 F	1SDA073864R1
E2.2...E6.2	IP30 Flange E2.2...E6.2 W	1SDA073865R1
E1.2	Flange IP54 different keys E1.2	1SDA073866R1
E2.2...E6.2	Flange IP54 different keys E2.2...E6.2	1SDA073867R1
E1.2	Flange IP54 keys N. 20005 E1.2	1SDA073868R1
E2.2...E6.2	Flange IP54 keys N. 20005 E2.2...E6.2	1SDA073869R1
E2.2...E6.2	Sealable trip unit cover	1SDA073870R1



High or low terminal covers- HTC/LTC

		3 poles	4 poles
E1.2	HTC high terminal covers E1.2 2pcs	1SDA073871R1	1SDA073872R1
E1.2	E1.2 LTC low terminal covers E1.2 F 2pcs	1SDA073873R1	1SDA073874R1



Separators - PB

E1.2	PB Separators H=100mm 4pcs E1.2 F 3P	1SDA073877R1
E1.2	PB Separators H=100mm 6pcs E1.2 F 4P	1SDA073878R1
E1.2	PB Separators H=200mm 4pcs E1.2 F 3P	1SDA073879R1
E1.2	PB Separators H=200mm 6pcs E1.2 F 4P	1SDA073880R1
E1.2	PB Separators 2 pz E1.2 W FP 3P	1SDA076164R1
E1.2	PB Separators 3 pz E1.2 W FP 4P	1SDA076165R1
E2.2...E6.2	PB Separators 2 pz E2.2...E6.2 F 3P	1SDA076166R1
E2.2...E6.2	PB Separators 3 pz E2.2...E6.2 F 4P	1SDA076167R1
E2.2...E6.2	PB Separators 2 pz E2.2...E6.2 W FP 3P	1SDA076168R1
E2.2...E6.2	PB Separators 3 pz E2.2...E6.2 W FP 4P	1SDA076169R1

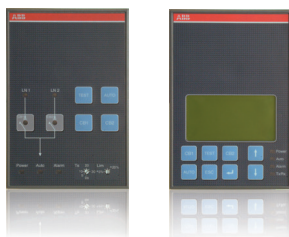


Full range of product and technical information place this part number in a search engine and download

1SDC200009D0203

Emax 2 power distribution ACBs

Mechanical accessories



Cables for mechanical interlock [Group 1]

Size	Type	Product Hierarchy 2900004 Order Code
E1.2..E6.2	Type A horizontal	1SDA073881R1
E2.2..E6.2	Type B,C,D horizontal	1SDA073882R1
E1.2..E6.2	Type A vertical	1SDA073885R1
E2.2..E6.2	Type B,C,D vertical	1SDA073886R1

Order one type of cable for each interlock. The cable must be ordered on the fixed circuit-breaker or on the fixed part of withdrawable circuit-breaker.

Lever for mechanical interlock of fixed circuit-breaker or mobile part [Group 2]

Taille	Type	3 Pôles	4 Pôles
E2.2	Lever for mechanical interlock	1SDA073889R1	1SDA073889R1
E4.2	Lever for mechanical interlock	1SDA073890R1	1SDA073890R1
E6.2	Lever for mechanical interlock	1SDA073891R1	1SDA073892R1

The lever for mechanical interlock is not required for E1.2

Support for mechanical interlock of fixed circuit-breaker [Group 3]

E1.2	Type A	1SDA073893R1
E1.2	Type A - installé sur plaque de fond	1SDA073894R1
E2.2 ... E6.2	Type A / B / D	1SDA073895R1
E2.2 ... E6.2	Type C	1SDA073897R1

Support for mechanical interlock of fixed part [Group 4]

E1.2	Type A	1SDA073896R1
E2.2 ... E6.2	Type A / B / D	1SDA073895R1
E2.2 ... E6.2	Type C	1SDA073897R1

Automatic transfer switch

E1.2..E6.2	ATS021	1SDA065523R1
E1.2..E6.2	ATS022	1SDA065524R1



Full range of product and technical information place this part number in a search engine and download

1SDC200009D0203

Contact us

ABB Ltd

Tower Court
Foleshill Enterprise Park
Courtaulds Way
Coventry CV6 5NX

Tel: 0333 999 9900

Fax: 0333 999 9901

Email: LV.Enquiries@gb.abb.com

Twitter: @ABBUKLV

www.abb.co.uk/lowvoltage

Note: We reserve the right to make technical changes or modify the contents of this document without prior notice. With regard to purchase orders, the agreed particulars shall prevail. ABB Ltd does not accept any responsibility whatsoever for potential errors or possible lack of information in this document.

We reserve all rights in this document and in the subject matter and illustrations contained therein. Any reproduction, disclosure to third parties or utilization of its contents – in whole or in parts – is forbidden without prior written consent of ABB Ltd.

Copyright © 2015 ABB Ltd
All rights reserved