

L.V. & M.V. SWITCHGEAR
 FACTORY AUTOMATION SYSTEM
 POWER DISTRIBUTION

COMPANY PROFILE & PRODUCT CATALOGUE

2022



Automation & control sales dept. / Hotline : +880 1715 198 443
Breaker & switchgears sales dept. / Hotline : +880 1711 548 558

Headquarter / E-mail: alobitan1@gmail.com
[http:// www.alobitanbd.com](http://www.alobitanbd.com)

ABOUT US

Alo Bitan is a power and electrical engineering companies in Bangladesh Since 1988. We have a group of professionally experienced engineers for solution of motor control panel, power distribution and factory automation equipment's Switch Gear, Metering, Measurement, PLC, Inverter/VFD, Electric Panel & Complete Sub-Station.

Alo Bitan is an authorized sole-agent and distributor of some world famous Brand in Bangladesh among them **Hitachi Industrial Equipment System Co. Ltd., Japan** and **Shihlin Electric & Engineering Corp., Taiwan**. Alo Bitan has already setup a reputed brand image in the consumers mind over 34 years successful operation in Bangladesh.

Our belief one satisfied client leads to another & a pro-active multi discipline & constructive approach has added much to growing list of clients & stablishment of long lasting business relation as a trustworthy partner for growth.

It will always be a advantage for us to give our very best in offering value-added services with essential stock of equipment, accessories & above all-a realiable, trusted & dependable work force.

BUSINESS UNIT



VISION

To be and remain continually offers update solution to our valued clients in the Industrial power controll & automation sector in Bangladesh.



MISSION

To be a global solution provider to many and OEMs that require least man-machine interface, minimal downtime and comprehensive solution in there factories / plants thus contributing to economic growth all around.



Mr. Helal Uddin
Founder

Organogram



Mr. Afsar Uddin
Director & CEO



Mr. Ravi
Commercial Executive



Mr. Humayun
Manager Commercial



Mr. Julhas
Manager Showroom



Mr. Tony
Manager Accounts



Mr. Sumon
HR & Admin



Engr. Sazzad
Manager Sales



Engr. Shahin
Head of Sales



Engr. Sohel
Head of Technical



Engr. Obaydur
Project & Planning



Engr. Khalil
Manager Factory

Message from Director

Our honorable founder **Mr. Helal Uddin Helu** has made significant contribution ever since Alo Bitan was established in the year 1988. With his electrical & technical expertise, Alo Bitan has risen on the progress graph with unprecedented growth. Many feathers have been added to our basket with renowned and prestigious clients by his commitment and technical support. A total of 60+ staff are working with full dedication & commitment by his guidance. We believe without his conurbation we can't reach that milestone position. He is my Father and he passed away to the almighty in 2021. His Policy, commitment, discipline & honesty is our inspiration. His ideal always will be live in us & help us to move forward.



Mr. Helal Uddin
Founder

A thorough technocrat above the ordinary, **Mr. Afsar Uddin Ananda**, ever since he joined Alo Bitan in 2005 has undoubtedly proved his versatility in furthering cordial technical expertise and developing applications. Our feature strategy to look forward for a sustainable & innovative technology for our next generation. We are also taking initiatives to explore technology to our customers through intensive training program. We also believe that customer feedback will also contribute in our improvement of the company. In practical Alo Bitan is moving to expand our activities to production in a big scale for Power Distribution, LV Switchgear, Industrial Automation & other related products in our factory. We are also developing R&D for energy management & products study.



Mr. Afsar Uddin
Director & CEO

Why Alo Bitan

Quality : We are committed to our customer for quality products & prompt service.

Business strategy : We have ensure business excellence for a long time & trusted to provide a full range of engineering & electrification related product service.

Wide range of variety : Alo Bitan delivered Engineering service & offer wide range of Electrical, Mechanical, Automation & Control System for industries.

Warranty & Return Opportunity : Alo Bitan always working hard to solve any problem you might have of our products. We offer a manufacturer level warranty of our supplied product that you can enjoy tension free happy purchase.



Authorized Distributor



HITACHI
Inspire the Next
Japan

ABB
Electrification Products
ITALY, GERMANY

Shihlin Electric
Taiwan

Mikro
Malaysia

FRAKO
Power Capacitor
Made in Germany

Autonics
Sensors & Controllers
Korea

UMS
MCB, RCCB
Malaysia

SAMWHA
Power Capacitor
Korea

SELEC
Measuring Instrument
India

RISHABH
India

SKN-BENTEX GROUP
Motor Starter
India

E/NTES
Measuring Instrument
Turkey

Kumanical
Kumanical Industrial Automation
Cooling Fan
China

HPL
Switchgears
India

NOJA POWER
Empower the world.
Australia

SUPPLIER

Schneider Electric
Electrification Products
France

HAVELLS
Change Over, DB
India

BIGM
Rotary Switch
Taiwan

HENGZHU
Panel Lock
China

EPCOS
Capacitor
India

GRUNDFOS
Pump, Denmark



TRAFOTELETTRO
endless transformation

PHOENIX CONTACT
Connector, SMPS
Germany

DSE
Controller
UK

DEIF
Controller
Denmark

Panasonic
Servo Drive
Japan

LUMEL
EVERYTHING COUNTS

ROCKWILL
ABS, Isolator
China

sfim
Meter, CT
China

Pilot
Split Core CT
China

OMRON
Industrial Automation
Japan

SUNTEX
Instrument
Taiwan

PRODUCT OFFERING

HITACHI

Variable Frequency Drive

HITACHI

Switchgears

ABB

Switchgears

ABB

Drives & Motor

ABB

Switch & Socket

Shihlin

Magnetic Contactor

Shihlin

Servo Drive & VFD

Mikro

IDMT Annunciate

SAMWHA

Power Capacitor

FRAKO

Power Capacitor & Controller

Autonics

Sensor & Controller

SELEC

Meter & Timer

RISHABH

Transducer & Isolator

SKN-BENTEX GROUP

Manual Star Delta Starter

NOJA POWER

Automatic Circuit Recloser

Award & Achievement



HITACHI
Inspire the Next

23 Nov 2017

ALO BITAN
131, B.C.C ROAD,
NAWABPUR, DHAKA,
1100 BANGLADESH

Attention: Mr. Ananda

Dear Sir,

This is to certify that **ALO BITAN**, of 131, B.C.C ROAD, NAWABPUR, DHAKA, 1100 BANGLADESH is our authorized distributor to sell, market, distribute and service Hitachi Inverter & Switches in Bangladesh.

This Letter of Appointment remains valid until 30th Sept 2018.

Thank you

Yours truly,


Anthony Ng
Deputy General Manager
ICE Group
Hitachi Asia Ltd.

Hitachi Asia Ltd.
23 Prince Street #11-12nd Floor Singapore 05059
Tel: 65 434 1663 Fax: 65 433 1761
Company No. 18804762
http://www.hitachi.com.sg

Shihlin Electric

2018

Distributor Agreement

Representative:
ALO BITAN

2018 Shihlin Electric
Authorized Distributor of Low Voltage Switchgear
In Bangladesh

Group President: 
士電機字印107003號

Mikro
MIKRO SDN. BHD.
(Co. No. 423468-T)

No. 1, Jalan DP 77, Sime LEP Industrial Park,
49800 Shah Alam, Selangor D. E. Malaysia
Tel: 603-9182 7100 Fax: 603-9182 7166
E-mail : mikro@mikro.com
Website: www.mikro.com

Our Ref: YSC/0112/17
Date: 1 September, 2017

LETTER OF DISTRIBUTORSHIP

With reference above, we MIKRO SDN. BHD., would like to inform that M/S ALO BITAN having Corporate address at 131, B.C.C. Road, Rana Electric Market (2nd Floor), Dhaka-1100, Bangladesh is our retail dealer for PFR (Power Factor Regulator) and Capacitors.

This appointment will expire on 31st August 2018, unless be withdrawn prior to the expiry date, and this appointment is subjected for further yearly renewal.

Thank you.

Yours faithfully,
Mikro Sdn Bhd


YS Chan
Sales & Application Manager

FRAKO

FRAKO Kondensatoren- und Anlagenbau GmbH

ALD BITAN
131, B.C.C. Road,
Rana Electric Market (2nd Floor),
Dhaka-1100
Bangladesh

Attention: Mr. Ananda

Dear Sir,

This is to certify that **ALO BITAN**, of 131, B.C.C ROAD, NAWABPUR, DHAKA, 1100 BANGLADESH is our authorized distributor to sell, market, distribute and service SAMWAHA CAPACITOR CO., LTD in Bangladesh.

Thank you

Yours truly,


Mr. Bruce / Project Manager
SAMWAHA CAPACITOR CO., LTD

Samwha Capacitor Co., Ltd.
Address: 124, Bui B. Nana Street, Ho Chi Minh City
Khuong Duong Street
City: Ho Chi Minh City

SELEC

AUTHORISED BY SELEC
DEALER
AUTHORISED BY SELEC

SELEC
Creating Best Value

This is to certify that
M/s. Alo Bitan
is the Authorised Dealer for
Selec brand of products in
Bangladesh

All products sold by them are covered
under standard warranty of one year

Y Meters Y Power Factor Controllers Y CTs Y Protection Relays
Y Time Switches Y Timers Y Counters Y Temperature Controllers
Y Process Indicators Y PLCs & HMI Y VFDs Y Aluminium Enclosures


Samir Kaji
(Managing Director)

Valid from
2019 to 2020

ENTES

29/01/2018

AUTHORIZATION CERTIFICATE

ALO BITAN
131, B.C.C. Road,
Nawabpur, Dhaka,
1100 BANGLADESH

Attention: Mr. Ananda

Dear Sir,

This is to certify that **ALO BITAN**, located at 131 B.C.C. ROAD, NAWABPUR DHAKA, 1100 BANGLADESH is our authorized distributor to sell, to perform marketing activities, to distribute and to give service for Entes branded products in Bangladesh.

This Authorization Certificate is valid until for the period between 1st January 2018 and 1st January 2019.


Ferhat YETIKER
International Sales Manager
ENTES ELEKTRONIK A.S.

ENTES Elektronik GmbH (Held in Turkey)
Dulaklar Caddesi No: 23/176 Cumhuriyet Mahallesi TURKYE
Tel: +90 216 313 01 10 Gibi Fax: +90 216 313 16 75
Web: sales@entes.com.tr Export: info@entes.com.tr www.entes.com.tr

SKN Dealer's Certificate **SKN-BENTEX GROUP**
ELECTRICAL DIVISION

We are pleased to appoint

to **ALO BITAN**
BANGLADESH

as Authorized Dealer/Distributor for Sale & Services of **SKN-BENTEX** range of products for the period of 1st April, 2017 to 31st March, 2018.

Bentex Control & Switchgear Co.
An ISO 9001:2008 & ISO 14001:2004 Certified Co.
Bentex Group, Bentex Ind. Area, Phase II, New India, 18600
Bentex Group, Bentex Ind. Area, Phase II, New India, 18600


Rohit Gupta
Director Marketing

(Metering, KVAR, Motor Starters, MCB, RCCB, MCCB, Switchgears, Fans, Coysers, Menblock etc.)

Life is On **Schneider Electric**

Date: 3rd Sep. 2018
Our ref.: AHZ/2018/01/AloBitan

Subject: Authorization of supply Industry Automation Products

Dear Sir (s),

We would like to confirm hereby Alo Bitan as an authorized representative for submitting offer & supplying Schneider Electric products for the territory of Bangladesh.

Alo Bitan will promote and manage the following industry automation products of Schneider Electric:

VFD | Inverter/Drives | GPM | Signaling | Monitoring Products

Office address of Alo Bitan
Corporate Office: 131, B.C.C Road, Rana Market, Nawabpur, Dhaka-1100, Bangladesh

For any clarification with respect to the contents of this authorization, please contact us.

For and on behalf of Schneider Electric:

Yours Sincerely,


Sanjay Bala
Deputy Manager, Industry Automation Business
+91 9088 017550/031665

Schneider Electric Overseas Asia PTE LTD.
Bangladesh Branch Office
16B/16C East Wing,
Green Delta Arco Tower
25-27 Bhabarai C.A., Dhaka-1212, Bangladesh
Tel: +88 02 8825157/8825139/8825110
www.schneider-electric.com

Capacity



34+ Years of Experience



30,000+ Customers Served Till Date



5000+ Product



60+ Team Members



25,000+ Sq. Ft. Warehouse



15+ Bangladesh Industrial Clusters



Top 15+ World Class Brands



15+ Sales Engineer



Simplified E-commerce & Enterprise Portal

Commitment



Product Selection



Timely Delivery



Best Price



Credit Support



After Sales Support



Genuine Products



Product Training



Warranty Support



Installation Support

We are covering market Segment wise focus with customer-centric solutions

Builders

Panel Builder

Retail Channel

Sub Distributor

Projects

Projects Consultant

Project Contractor

System Integrators

Industrious

Machine Manufacturer (OEM)

Service Team

End User

An Elaborate Overview

Our experience on industries in the core sector that include



TEXTILES



CEMENT



WIRE & CABLE



FOOD & BEVERAGES



RICE PLANT AUTOMATION



METAL



WATER & WASTE WATER



BOILER AUTOMATION



LIFT & HOISTS



PULP & PAPER



HVAC



PRINTING & PACKAGING



FEED & AGRO

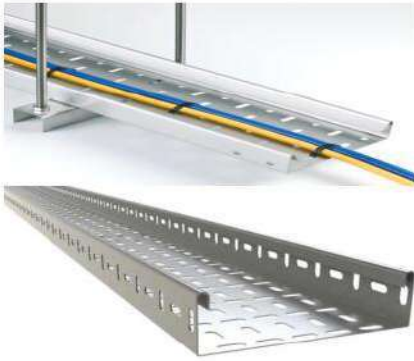


PHARMACEUTICAL



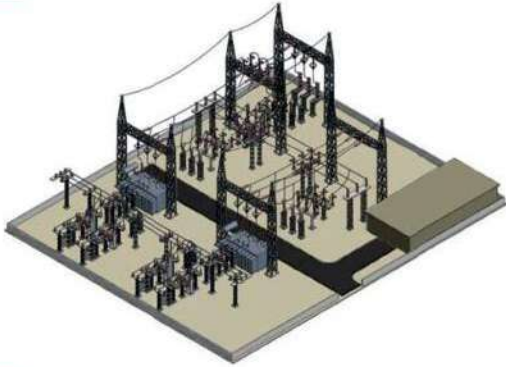
PLASTIC BAG MACHINE

Cable Laying



ALO BITAN'S cable laying services extend to both overhead and underground trenches with a wide range of operating voltages that guarantee safety, reliability and trouble free service for years to come

Substaon Design, Installation, Testing and Commissioning



- Site Survey and Single Line Diagram Design
- Layout Design
- Project Schedule preparaon and complete set of esmaon of all kind of work
- Consultancy, Drawing and Requirement to Connect With Transmission Line
- Earthing/ Grounding System Design (IEEE-80)
- Equipment Specificaon Check

Compact Substation



Compact Substation



Power Transformer



Cast Resin Transformer



ACR



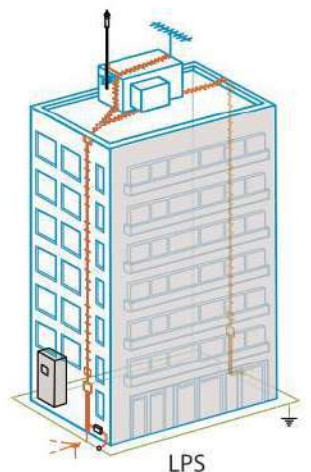
Motor Com



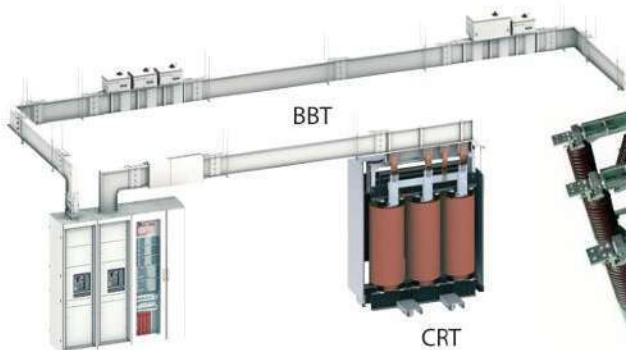
LT Switchgear



Distribution Panel



LPS



BBT

CRT



Insulation



Lightning Arrester



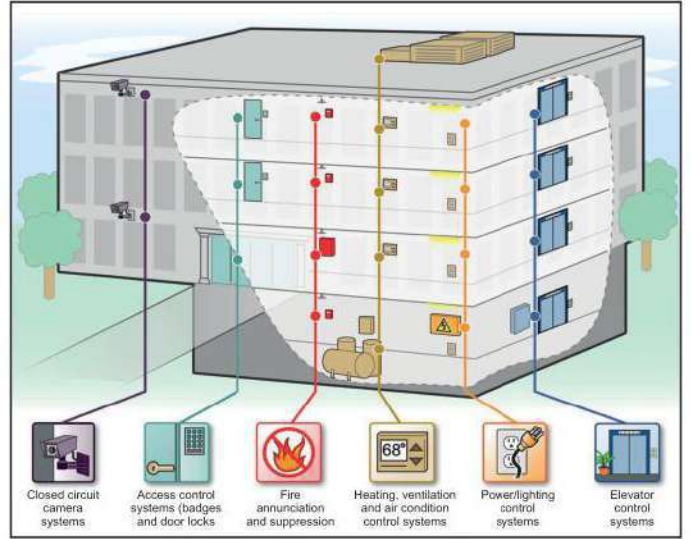
OPR60 & Counter



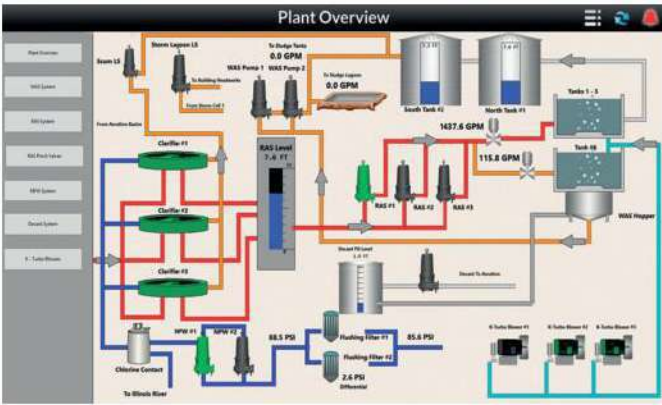
SPD



Industrial Substation Automation



Building Management System



Pump Monitoring Scada



Booster Pump



◀ **Mixture Machine 260kW Inverter**
 ALO BITAN has established itself as a paradigm of quality & perfection in the field of Sales & Service of Automation Panel Over Drive & PLC Panel are working in amost all industries

Drive & PLC Panels



Textile Machine Driven by Hitachi Inverter



CNG Station 260kW Hitachi Inverter

Hitachi Variable Frequency Drive

NEW



SJ-P1 Series

High Performance Inverter with High Starting Torque and Built-in VT, CT, SLV Control modes



NJ600B Series

High Performance Inverter with High Starting Torque, Easy Operation and Smooth Performance



SH1 Series

Advanced Industrial Inverter for High Starting Torque and Built-in VT, CT, SLV Control modes



NE-S1 Series

Economical Inverter With Simple Operating to realize Optimal Performance for Energy Saving Application



WJ-200 Series

Dual Rating Inverter for VT/CT application. Capable of Driving IM/PM Motors with Integrated Braking Circuit



WJ-C1 Series

Dual Rating Inverter for VT/CT application. Capable of Driving IM/PM Motors with Integrated Braking Circuit



Hitachi Motors
0.4 ~ 160kW, 2,4,6 Pole
200/400V, 50/60Hz



Hitachi PLC



Hitachi HMI

Hitachi Low Voltage Components

MCCB
15~4000A
100% ICU=ICS



ACB
AKN/AKS
630A-6300A
(65kA -120kA)



MCB
1A-63A (6kA, 10kA)
ELCB
40A-63A
(30mA, 100mA, 300mA)



MAGNETIC CONTACT
HS Series H Series
9A~50A (New) 9A~800A



Magnetic Contactor



Thermal Overload Relay
TR12B~TR600B
Range : Upto 600A





No.1 ELECTRIC COMPANY

TAIWAN

Shihlin Electric

<http://circuit-breaker.seec.com.tw>
E-mail: b.export@seec.com.tw



SS2 Series VFD
3-Ph 220V, 0.4 - 3.7kW
3-Ph 440V, 0.4 - 5.5kW



SC3 Series VFD
3-Ph 220V, 0.4 - 3.7kW
3-Ph 440V, 0.4 - 5.5kW



SE3 Series VFD
3-Ph 220V, 5.5 - 15kW
3-Ph 440V, 5.5 - 22kW



SA3 Series VFD
3-Ph 220V, 5.5 - 15kW
3-Ph 440V, 5.5 - 35.5kW



SF3 Series VFD
3-Ph 440V, 5.5 - 35.5kW



Breaking Unit
BKU Series 45kW, 160kW



SDH Series Servo
3-Ph 230V, 100W - 7.0kW



SDP Series Servo
3-Ph 240V, 50W - 7.0kW



DC Reactor



PLC
AX3GA series



HMI
EC200 Series



Temperature Controller
WT Series PID



Shihlin Electric

www.seec.com.tw

ASB

Alo Bitan

Industrial Electrical Automation



Air Circuit Breaker



Vacuum Circuit Breaker



Molded Case Circuit Breaker



Magnetic Contactor



Starter



Automatic Transfer Switch



Thermal Overload Relay



Capacitor Switching Contactor Counter



Miniature Circuit Breaker/ Manual Motor Starter



Relay & Base



Digital Power Meter



Residual Current Circuit Breaker (RCCB) Surge Protection Device (SPD)





Miniature Circuit Breaker
Range : 1P - 4P, 6A - 63A, 6kA



Residual Current Circuit Breaker
Range : 2P/4P, 25A, 32A, 40A, 63A, 100A, 6kA



Manual Motor Starter



Surge Protective Device



XT1 25A-160A TMD	XT2 25A-160A Ekip	XT3 200A-250A TMD	XT4 200A-250A Ekip	XT5 320A-630A Ekip	XT6 800A Ekip	XT7 1000A-1600A Ekip
---------------------	----------------------	----------------------	-----------------------	-----------------------	------------------	-------------------------

Moulded Case Circuit Breaker



E2.2 N/S
1000A-2500A 3/4P



E4.2 N/S/H
3200A-4000A 3/4P



E6.2 H/V
5000A-6300A 3/4P

Air Circuit Breaker



VD4 VCB 11kV (Fixed Type)
630A-1250A, 25kA-31.5kA

VD4 VCB 11kV (Drawout Type)
630A-1250A, 25kA-31.5kA

VD4 VCB 33kV (Drawout Type)
1250A-2000A, 31.5kA

VD4 VCB 33kV (Outdoor Type)
1250A-2000A, 31.5kA

Vacuum Circuit Breaker



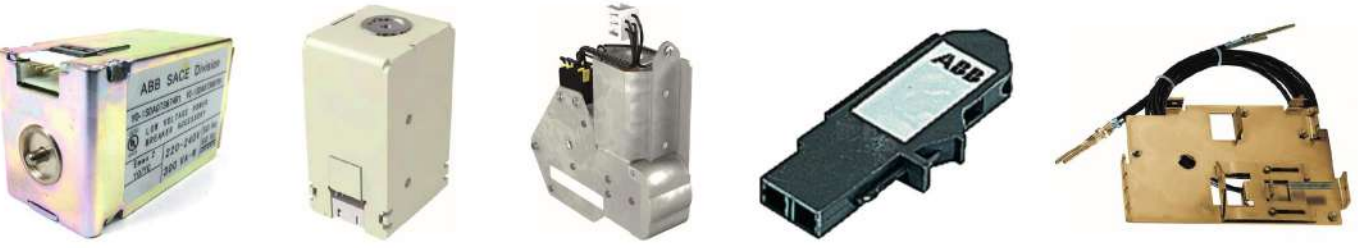
Shunt Coil

UVT Coil

XT2-XT4

XT6 W BASE

Accessories for MCCB



Shunt Coil

UVT Coil

Gear Motor

Auxiliary Contact

Mechanical Interlock



IDMT Relay

Accessories for ACB



AX09

AX80

AF140

AF750

AF1050

Magnetic Contactor



Thermal Overload Relay



Industrial Plugs & Sockets



Push Button



Multi-Function Meter



Soft Starter



Lightning Protection



ACS880

ACS580

ACS350



Three Phase Motor



Electromagnetic
Flow Meter

VFD & Motor



Power Factor Capacitor



Capacitors Duty
Contactor



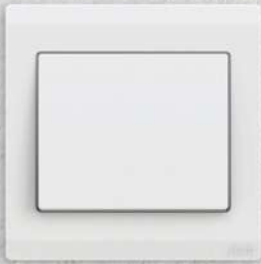
RVC



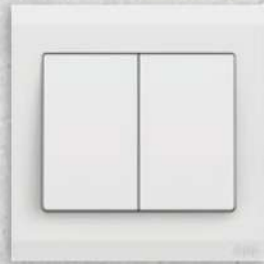
Reactor

Inora

Simplicity for timeless design



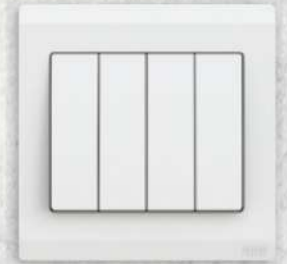
Model : BL101
1 Gang 1 Way Switch



Model : BL102
2 Gang 1 Way Switch



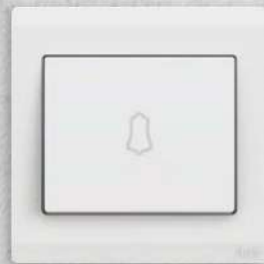
Model : BL103
3 Gang 1 Way Switch



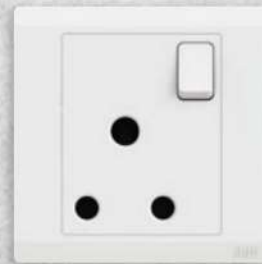
Model : BL104
4 Gang 1 Way Switch



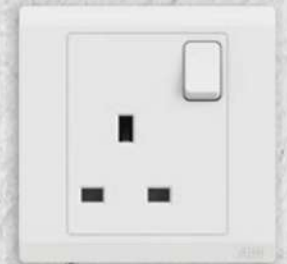
Model : BL111S
1 Gang 1 Way DP Switch
With Illumination



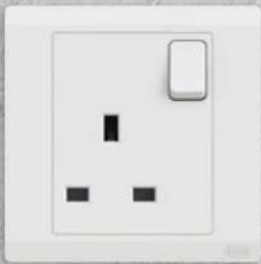
Model : BL429
1 Gang 1 Way Push Switch
Marked Bell



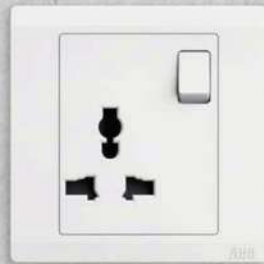
Model : BL209
1 Gang 15A
Switched Socket SP



Model : BL224
1 Gang 13A
Switched Socket SP



Model : BL237
1 Gang 13A
Switched Socket DP



Model : BL294
1 Gang 13A Switched
Multi-Socket Outlet



Model : BL301
1 Gang TV Outlet



Model : BL321
1 Gang Telephone Outlet



Model : BL318
1 Gang Data Outlet



Model : BL317
2 Gang Data Outlet



Model : BL422
Fan Regulator



PFR 140 / 120 / 60
Power Factor Regulator
Complies With Iec 61000-6-2 Standard



MK 2200L
IDMT Relay
RS485 Modbus-RTU



PFR 160 NX
Power Factor Regulator
NFC Communication
Complies with IEC 61000-6-4 standard



MK 201A
Earth Fault Relay
96x96mm IP54 Standard



MK 1000
IDMT Relay
96x96mm IP54 Standard



NX 301A
Earth Leakage Relay
96x96mm IP54 Standard



NX 204A
Over Current Relay
96x96mm IP54 Standard



AN 112 / 120 / 128
Programmable Alarm Annunciator
12, 20 or 28 Windows



DIN 300
Earth Leakage Relay



DPM 380
Digital Power Meter
Modbus RTU Communication



MU 250
Voltage Control Relay
Din Rain Type



Zero Phase Current Transformer



EPE BUSWAY SYSTEM, MALAYSIA

EPE SERIES 1kV - 36kV

- LV SABDWICH
- LV MINI
- LV NSPB
- MV NSPB

Plug-In Box & Tap-Off Box



Flange End



Feeder & Plug-In Busway



JOINT DETAILS



Joint Balancer



Busway Section



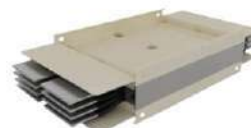
Vertical Offset



Horizontal Elbow



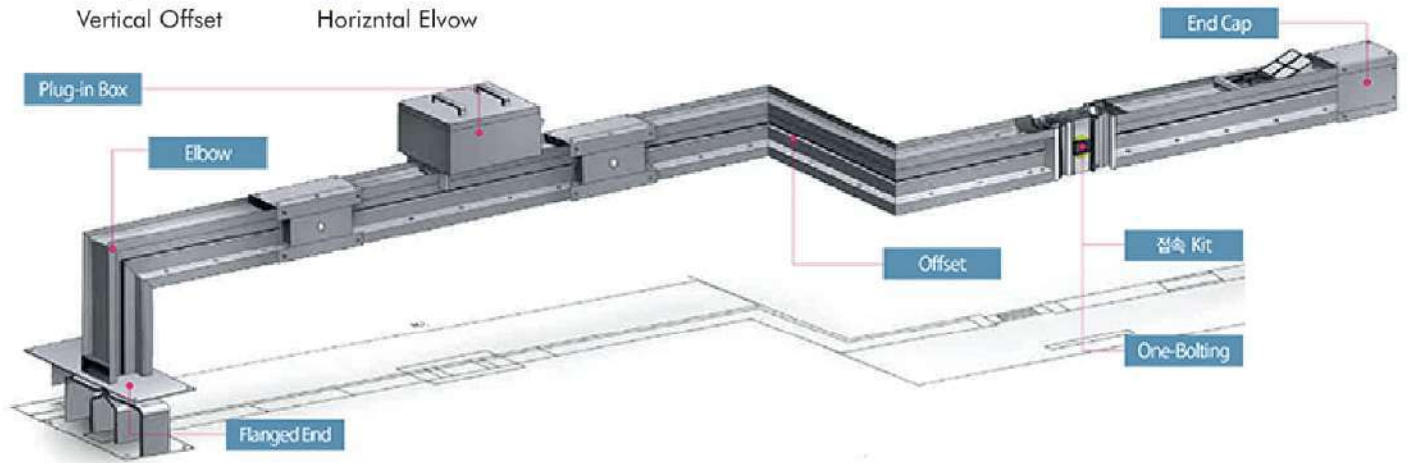
Single Stack



Double Stack



Triple Stack



UNITED MS ELECTRICAL MFG. (M) SDN.BHD. (65814-V)

Lot 5, Batu 17^{1/2}, Jalan Ipoh, Rawang Industrial Estate, 48000 Rawang, Selangor, Malaysia.
Website : <http://www.unitedms.com.my>



1P/2P/3P, (6A-63A), 6kA
Miniature Circuit Breaker (MCB)



2P (25A-63A) 30mA



4P (25A-100A) 30mA

Residual Current Circuit Breaker (RCCB)

① Oil Type High Voltage Power Capacitor

> Application

The Capacitors are designed for Power Factor corrector and harmonics filtration in power networks. They are all-film dielectric and impregnated with and environmentally friendly, Non-PCB Biodegradable insulating oil. In addition each capacitor each proved with an internal discharge resistor all SAMWHA Capacitors comply with most national & international capacitor standard.

- Capacitor benefits to**
- Improve Power Factor
 - Reduce Line Losses
 - Decrease Voltage Drop

Through that it helps greater **Energy Efficiency**

> Product Scope

- **Power Range** Single Phase 25 kvar to 1000 kvar
 Three Phase 50 kvar to 500 kvar
- **Voltage Range** Single Phase 1000V to 22000V
 Three Phase 1000V to 11000V
- **Frequency** 50Hz / 60Hz
- **Applicable Standards** IEC, AISI / IEEE, NEMA



② Oil Type Low Voltage Power Capacitor

> Application

Capacitors are intended for the improvement of Power Factor in low voltage power networks. Used advanced technology consists of metallized PP film with extremely low loss factor and dielectric system is self-healing. The dielectric system is self-healing and biodegradable and environmentally friendly. The capacitors have overpressure protection to disconnect it from the supply in the event of internal failure and at the end of its operational life. The construction described above and the use of high quality materials ensure reliability and longevity.

- Capacitor benefits to**
- Improve Power Factor
 - Reduce Line Losses
 - Decrease Voltage Drop

Through that it helps greater **Energy Efficiency**

> Product Scope

- **Power Range** 0.2kvar to 150kvar
- **Voltage Range** 220V to 1000V
- **Frequency** 50Hz / 60Hz
- **Applicable Standards** IEC, AISI / IEEE, NEMA



③ Dry Type Low Voltage Power Capacitor

> Application

Capacitors are intended for the improvement of Power Factor in low voltage power networks. Used advanced technology consists of metallized PP film with extremely low loss factor. The dielectric system is self-healing and has no liquid impregnant. Capacitor enclosed in cylindrical aluminium cases. The capacitors have overpressure protection to disconnect it from the supply in the event of internal failure and at the end of its operational life. The construction described above and the use of high quality materials ensure reliability and longevity.

> Product Scope

- **Power Range** 0.2kvar to 50kvar
- **Voltage Range** 220V to 1000V
- **Frequency** 50Hz / 60Hz
- **Applicable Standards** IEC, ANSI / IEEE, NEMA



FRAKO Kondensatoren- und Anlagenbau GmbH

Power Capacitor

Reactive Power Control Relays

Power Factor Correction System



FRAKO quality features:



Patented tensioning spring terminal
Unique FRAKO feature



Three-phase overpressure disconnector
 Fluid-granulate filling material
Unique FRAKO feature



Segmented MPP film
Unique FRAKO feature



Patented contact rings
Unique FRAKO feature

Frako Power Capacitor

Unique Feature



PFI Controller

FRAKO Kondensatoren- und Anlagenbau GmbH
 LKT 12,5-690-DP60
 K18-0664

Kvar	V/60Hz	A	Kvar	V/50Hz	A
12.5	690	10.5	10.4	690	8.7
9.9	615	9.3	8.3	615	7.8
9.5	600	9.1	7.9	600	7.6
8.5	570	8.6	6.0	570	7.2
7.2	525	8.0	5.0	525	6.6

3x23.2 μF +/-0.5% U_i 3.9/8 kV
 Temp.-cl. -40 + 60°C t_c 75° C

protected 10 000 A not above 690 VAC

dry, non PCB
 Overpressure disconnector
 EN 60831 IEC 831/08.2003
 Made in Germany
 1312

FRAKO 01DLNT



Capacitor Duty Contact



Harmonic Reactor



Power Factor Correction System



BEN Series

BX Series



BJ Series

BS5-P Series



BRQM Series

BRQP Series

Photoelectric Sensor



PRD Series

PRA Series



PSN Series

PRL Series



PR Series



CR Series

Proximity Sensor



TK Series



TZM Series



TCN Series

Temperature Controller



PSAN Series

PSS Series

Pressure Sensor



Auto Door Sensors



Rotary Encoder



Analog Timer



Counter / Timer



SMPS



Pressure Transmitters



Control Switch



Panel Meter / Tower Light

PRODUCT SELECTION GUIDE

Electrical Digital Panel Meters



MFM384



EM368



VAF39A-1



MV334



MV305

Protection Relay



600 VPR



900CPR-3



MPR-3M

Temperature Controller



TC513



TC544C

Power Factor Controller



APFC-147-112



APFC-148

Digital Hour Meter



LT920A

Panel Meters



MA12

Annunciator



AN-8-0-0-230V

Counter & RPM Meter



XC10



XC2200

Multifunction Display



PIC101

Relay Module



RLYMD-2-S8

ELR



ELCTR35

Current Transformer



SPCT 100



SPCT 40

PLC & HMI



SP112-GT40



SP3-GT35

Timer



600XU



600DT



800XA



Frequency Drive



Solar On Grid Inverter



Advanced Static VAR Generators



Static Voltage Regulators

Power Supply



RPS240



TS2M1



55XU



**Industrial Control Products
Test & Measuring Instruments**



RISH LM1360



RISH EINE



RISH Master 3430

DIGITAL PANEL METER



ND30 IOT



SM61 IOT

LUMEL IOT



RISH CON-CA



RISH CON-I



RISH CON-CV

TRANSDUCER & ISOLATOR



RISH Xmer
104/60P(45)



RISH Xmer
225/167P(50)

Current Transformer



TNC 2NO 2NC 60D -25A
Line Currents with OFF, 4 Pos.-6A
Phases to Neutral with OFF, 7 Pos.6A
1-0-2 3ph3 pole -10A
Auto-Off-Manual

CAM SWITCHES



RISH RELAY - AR



RISH RELAY - I



RISH RELAY - V

PROTECTION & MONITORING RELAY



RISH Clamp1000A



RISH Max 10

DIGITAL CLAMP METERS



Oil Star Delta Starter



Manual Star Delta Starter



16A

32A

Changeover Switch & Dol Motor Starter



Change Over Switches Knife Type



Change Over Switch



Distribution Board



Accl Circuit Breaker & Cylindrical Capacitor



Change Over Switch & Load Break Switch

ENTES ELEKTRONIK CIHAZLAR IMALAT VE TICARET A.S.

- Power Quality and Energy
- Electrical Measurement
- Remote Monitoring
- Protection & Control



CKR-93T
IDMT Relay



Digital Volt Meter



Digital Ammeter



Digital Multimeter



Voltage Monitoring



Phase Failure &
Phase Sequence



Level Controller

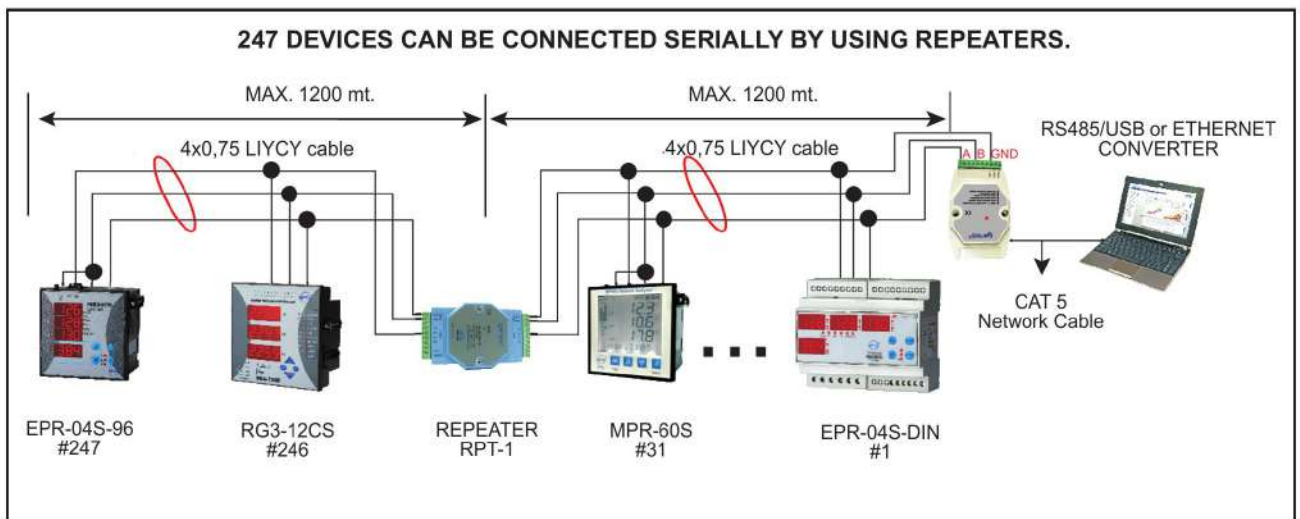


Multifunction Timer



Timer

www.entes.com.tr



* ENTES recommends 4x0,75 LIYCY mm² cable for RS-485 communications



ACB



Magnetic Contactor



Push Button & Pilot Light



Inverter



NSX

CVS

MCCB



Soft Starter ATS Family



Zelio RM Series Control Relay



Zelio RXM Relay



Zelio RUM Relays



HMI



Power Meter



PLC

Power Factor Equipments & Panel Accessories



Power Capacitor

Controller

Reactor

EPCOS



Current Transformer



Micro Switch



Cam Switch

BIGM



Current Transformer

Meter

SFIM



Split core Current Transformer

PILOT

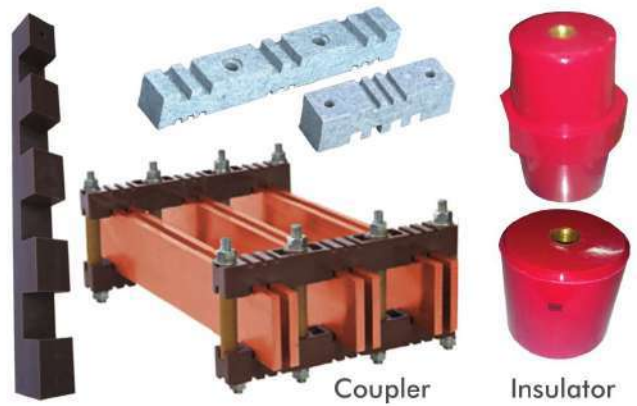


Fan Net

Cooling Fan

Cooling Fan Fuse & Base

KUMANICAL



Coupler

Insulator

BUSBAR



Panel Lock

Handle

HENGZHU



RT FUSE & BASE

Low Voltage Products



Servo & Compact AC Geared Motors

PANASONIC



Industrial Automation

OMRON



DSE 8610 MKII

DSE8660 MKII

DSE331

DSE020

DSE9460

DSE



Pump

GRUNDFOS



AGC 150



AGC

DEIF



SMPS

Terminal Blocks

PHOENIX CONTACT



Stabilizer

Power Filter

UPS Solutions

DELTA



PH 405-60 Sensor

WTW D.O. Sensor



ORP Transmitter



Dissolved Oxygen Transmitter

SUNTEX

High Voltage Products



Noja ACR



ABB VCB 33kV (Indoor)



LA 33kV



ABB VCB 33kV (Outdoor)



ABS 33kV



Isolator 33kV



CT 33kV



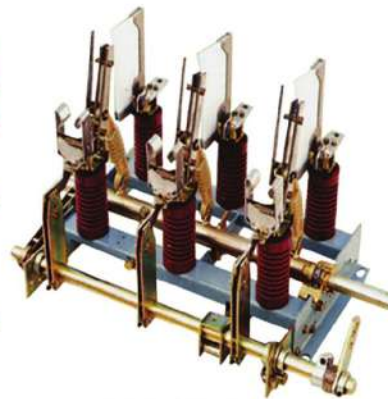
PT 33kV



VCB 12kV



LBS 12kV



LBS 12kV



12kV Dropout Fuse



PT 12kV



CT 12kV



Fuse 12kV/33kV



12kV
36kV
Lightning Arrester

SUB STATION EQUIPMENT

HT SWITCHGEAR (LBS)



This protective equipment is used at 11 kV sub-station. The main Load Break Switch (LBS) mechanism is available for 630A & the over current protection scheme is done through HRC fuse. The panel includes 3 numbers of CT (Current Transformer) & 2/3 numbers of PT (Potential Transformer) for measuring system current & voltage respectively & 3 numbers of HRC Fuses for protection of overload. The scheme is so designed that if fault occurs in any phase it will isolate the whole three phases from the system instantly. The panel also includes 3 numbers of Ampere meters & one number of Voltmeter with selector switch for monitoring system current & voltage. The standard panel size is 900x900x1800 mm & weight is around 450kg.

HT SWITCHGEAR (VCB)



MAIN FEATURES

- ❑ Long maintenance free operation
- ❑ Fully metal clad design
- ❑ Horizontal isolation
- ❑ Bus bar system fully insulated
- ❑ Manual or motor charged main
- ❑ Closing mechanism
- ❑ Fully rated earth switches
- ❑ Complete set of interlocks and
- ❑ Padlocking facilities
- ❑ Isolatable voltage transformer
- ❑ Ample current transformer
- ❑ Ccommodation
- ❑ Extensive use tropical environments
- ❑ Safety interlock
- ❑ 20,000 Operations on vacuum breakers
- ❑ As latest IEC 62271 - 100 and -200 standards

DISTRIBUTION BOARD (MDB)



Low Voltage Switchgear

Alo Bitan offers switchboards fitted with low voltage circuit breakers in single and three phase configurations that can be used as motor control centres, power illumination CTC systems and distribution boards compliant with latest building regulations.

Main Advantage:

- ❑ Compact, space-saving, side-by-side and easily installed.
- ❑ Flexible and versatile, easily adapted to a variety of applications.
- ❑ Safe and reliable and user friendly
- ❑ Reasonable prices for high quality service.
- ❑ Short response times, and quick delivery.
- ❑ Excellent sales support and full range of service solutions.
- ❑ Type-tested switchgear assemblies in accordance with IEC/EN 61439

PFI PLANT



Power Factor of the system is degraded due to inductive load of different industries and big apartments. Alo Bitan manufacture PFI (Power Factor Improvement) Plant for improving the degraded Power Factor of the system. We have microprocessor based PFC (Power Factor Correction) relay up to 16 stages. The Capacitors we use are of different rating (2.5, 5, 10, 20, 25, 50 KVAR.... etc) and corresponding Magnetic Contactor for suitable stepping of the Capacitor bank. Sometimes we also use detuned Reactor with the Capacitors for harmonic filtration of the system. The standard panel size is 600x600x1700 mm (single unit) and the weight is around 200 kg.

Project Reference



LV Equipment & Measuring Instrument
Walton Group



ABB Switch & Socket
BRAC University - New Campus



Low Voltage Equipment
Hazrat Shahjalal International Airport Terminal-3



2400 KVAR APFC
Grameenphone Switch at Nobinogor, Savar



33KV 1250A ABS with Earth Switch
Danga Industrial Park at Narsingdi



33KV 1250A & 800A Indoor Switchgear
Famous Steel & Rerolling Mills Ltd.



33KV1250A Outdoor type VCB
Safiul Alam Steel Mills Ltd.



11KV 1250/630A HT Switchgear Panel
Narayanganj Wasa



LT & 1200KVAR PFI Plant
Naheed Group



Saidabad Water Treatment Plant
450KW VFD Panel



Low Voltage MCC Panel
Far East Group



LT / MCC Panel
Noman Group



LPS, OPR-60
Saidabad Water Treatment Plant



Relay Control Panel
SAS Steel Mill



SDB//DB Board
Sikder Center-Banani (Illuminate BD Ltd.)

Project Reference



11/0.415 KV 1250 KVA Sub-Station
Medicon Pharmaceuticals Ltd.



Main Distribution Board (MDB)
Metrocem Ispat Ltd.



Low Voltage Switchgear with Bus-coupler
Pretty Composite Textiles Industries Ltd.



11/0.415KV 2500KVA Transformer with OLTC
Delsey Cotton Spinning mills Ltd.



Low Voltage Switchgear
Far East Spinning Industries Ltd.



Motor Control Center (MCC)
FKL Spinning Ltd.



Main Distribution Board (MDB)
Danish Foods Ltd.



Motor Control Center by Star-Delta
Habitus Fashion Ltd.



11/0.415KV 800KVA ABB Compact Substation
Elegant Square at Gulshan Avenue



SERVICE CENTRE

We provide component level repair for:

- > AC/DC drives of any make and any rating
- > CNC, Servo drives with CCU TFT module
- > Control cards and display cards of all machines

Our repairing centre at ALO BITAN is a high-end, state-of-the-art facility equipped with latest technology tools to repair AC drives and other automation products in minimum time.

Every product is tested on load at our test bench after being duly repaired to ensure that the production at the site does not suffer due to the same fault.

Our engineers and technicians are fully trained to use the latest technology for testing & repairing.

Picture with Principal Suppliers



Alo Bitan Shop Funder Mr. Helal Uddin & His Son Mr. Afsar Uddin Ananda



Mr. Afsar Uddin Ananda Director & CEO of Alo Bitan at Corporate Office



Alo Bitan & Shihlin Electric Shop



Mr. Afsar Uddin Ananda Director & CEO of Alo Bitan at Head Office



Shihlin Electric People visiting Alo Bitan Chairman Mr. Helal Uddin



Alo Bitan Head Office, Dilkusha Center, Motijheel, Dhaka



Mr. Helal Uddin, Chairman of Alo Bitan Taking award from Mr. Mozammel Haque of Bangladesh Minister for Liberation War Affairs at BICC, 2018 March



Seminar of Shihlin Electric Product 2017 at Hotel Fars, Bijoy Nagar, Dhaka

Picture with Principal Suppliers



Hitachi Seminar Presentation by Alo Bitan Chairman Mr. Helal Uddin



Hitachi Seminar Presentation by Alo Bitan Director Mr. Afsar Uddin Ananda



Mr. Helal Uddin, Chairman & Mr. Afsar Uddin, CEO of Alo Bitan in a Seminar of Hitachi Inverter & Switch



Shihlin Product Seminar Presentation by Alo Bitan Director Mr. Afsar Uddin



Hitachi Seminar Presentation by Alo Bitan Chairman Mr. Helal Uddin



Shihlin Product Seminar Presentation by Shihlin Electric Mr. Eric Lio



Hitachi Product Seminar 2019 at The Westin, Gulshan, Dhaka



Shihlin Product Seminar 2019 at Lake Shore Hotel, Gulshan, Dhaka

Picture with Principal Suppliers



Mr. Helal Uddin, Chairman & Mr. Afsar Uddin, CEO of Alo Bitan in a Business Tour of Hitachi Switch in Bangkok, Thailand



Mr. Helal Uddin, Chairman & Mr. Afsar Uddin, CEO of Alo Bitan in a Business Tour of Shihlin Electric in Taipei, Taiwan



Mr. Afsar Uddin Ananda, CEO of Alo Bitan in a Business Tour of Hitachi Narashino, Tokyo, Japan



Mr. Helal Uddin, Chairman & Mr. Afsar Uddin, CEO of Alo Bitan in a Business Tour of Shihlin Electric in Taipei, Taiwan



Hitachi Narashino, Japan Inverter Factory Visit-2018 by Alo Bitan with Customer.



Mr. Helal Uddin, Chairman & Mr. Afsar Uddin, CEO of Alo Bitan at the Factory Tour of Shihlin Electric in Taipei, Taiwan



Mr. Afsar Uddin, CEO of Alo Bitan with Engineer Sohel Rana visiting Hitachi, Nanjing Factory for Inverter Training



Mr. Helal Uddin, Chairman & Mr. Afsar Uddin, CEO of Alo Bitan at Taipei 101, Taiwan

Picture of Exhibition & Seminer



DTG-16th 2019 Jan, Dhaka, Bangladesh at ICCB



DTG-15th 2018 Feb, Dhaka, Bangladesh at BICC



Yellow Page Expo- 2018 Mar, Dhaka, Bangladesh at BICC



Energy & Building EXPO- 2017 Mar, Dhaka, Bangladesh at BICC



DTG-16th 2019 Jan, Dhaka, Bangladesh at ICCB



Mr. Helal Uddin, Chairman & Mr. Afsar Uddin, CEO of Alo Bitan visiting for the 20th Anniversary of MIKRO, Malaysia.



Elecrama 2020, New Delhi India



Power GEN.-2022 October, Dhaka, Bangladesh at ICCB

SOME PROJECTS REFERENCE LISTS

Group of Industries

No.	Project Name	Application
1	Aftab Group	ATS Panel, DB, PFI, General Electric Goods
2	Akij Group	315kw Inverter, Capacitor and Electric goods
3	Aman Group	Inverter, General Electric Goods
4	Anwar Group	Inverter, Circuit Breaker, Electric Product
5	AB Group	Inverer, General Electric Goods
6	Badsha Group	Inverter, General Electric Goods
7	Basundhara Group	Inverter, General Electric Goods
8	Beximco Group	PLC Automation Work
9	Crony Group	Energy Monitoring System
10	City Group	Inverter, General Electric Goods
11	DeshBandhu Group	Stablizer, General Electrical Goods
12	Echo Tex Group	DB, PFI, General Electric Goods
13	Fakir Group	DB, PFI, General Electric Goods
14	Hameem Group	Inverter, General Electric Goods
15	Ispahani Group	Substation Equipment, Inverter, Electric Goods
16	Jamuna Group	Inverter, General Electric Goods
17	Karim Group	Substation Equipment, Inverter, Electric Goods
18	Madina Group	Substation Equipment, Inverter, Electric Goods
19	Meghna Group	Inverter, Softstarter, General Electric Goods
20	MetroCem Group	Substation Equipment, Inverter, Electric Goods
21	MSA Group	Inverter, General Electric Goods
22	Mondol Group	Inverter, General Electric Goods
23	Mosharaf Group	Inverter, General Electric Goods
24	Mashati Group	Inverter, General Electric Goods
25	Naheed Group	Inverter, PLC, Electric Goods
26	Nassa Group	Inverter, General Electric Goods
27	Noman Group	Inverter, Sensor, Substation, Electric Goods
28	NZ Group	Substation Equipment, Inverter, Electric Goods
29	NR Group	Inverter, General Electric Goods
30	Osman Group	Inverer, General Electric Goods
31	Partex Group	Substation Equipment, Inverter, Electric Goods
32	Pran-RFL Group	Substation Equipment, Inverter, Electric Goods
33	Purbani Group	Inverter, General Electric Goods
34	Shepherd Group	Inverter, General Electric Goods
35	TK Group	PFI, General Electric Goods
36	Salma Group	PFI, General Electric Goods
37	Sinha Group	Inverer, General Electric Goods.
38	SM Group	Inverer, General Electric Goods
39	Urmi Group	Inverer, General Electric Goods
40	Youth Group	Inverer, General Electric Goods

Textile Industries

41	Adnan Textile	Substation Equipment, Inverter, Electric Goods
42	AGC Spinning	PFI, General Electric Goods
43	Ashik Composit	Inverter, General Electric Goods
44	Asia Composit	Inverter, General Electric Goods
45	Far East Spinning	450Kw Inverter, General Electric Goods
46	RingShine Textile	Inverter, General Electric Goods
47	Sanjana Fabrics	Automation, Inverter, General Electric Goods

No.	Project Name	Application
48	Tara Spinning	Inverter, General Electric Goods
49	Knit Cotton	Inverter, General Electric Goods
50	Techno Textile	Inverter, General Electric Goods
51	Thermax Spinning	Inverter, General Electric Goods
52	Unimex Textile	Inverter, General Electric Goods
53	Envoy Textile	Inverter, General Electric Goods
54	Prime Textile	Inverter, General Electric Goods
55	Mubarak Spinning	Inverter, General Electric Goods
56	Nagrana Spinning	Inverter, General Electric Goods
57	Al Razi Spining	Inverter, General Electric Goods

Engineering Company

58	EnergyPac Enginee.	General Electric Goods
59	Pran-RFL Group	General Electric Goods
60	System Engineering	General Electric Goods
61	Powermann	General Electric Goods
62	Mampower	General Electric Goods
63	Dana Engineering	General Electric Goods
64	Reverie Power	General Electric Goods
65	Efficient Power	General Electric Goods
66	Satco Electric	General Electric Goods
67	TNS Engineering	General Electric Goods
68	Mega Star	General Electric Goods
69	Power Plus Enginee.	General Electric Goods
70	Mech Power	General Electric Goods
71	Western Engineering	General Electric Goods
72	Marshal Engineering	General Electric Goods
73	Gazi International	Inverter, General Electric Goods
74	Sohel & Brothers	Inverter, General Electric Goods

Other Company

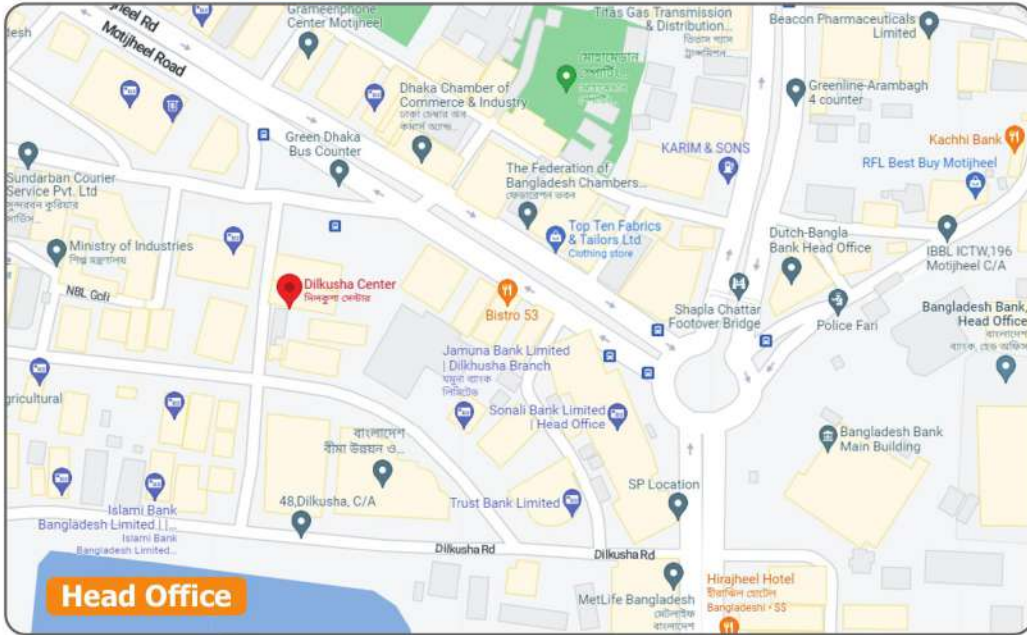
75	BSRM Steel	2500A ATS Panel, General Electric Goods
76	Salam Steel	PFI, Substation Equipment
77	Zahir Steel	PFI, Inverter Panle, General Electric Goods
78	Baized Steel	PFI, General Electric Goods
79	Sadek CNG	260Kw Inverter
80	NS CNG	Inverter, General Electric Goods
81	Priyo Auto Bricks	Inverter, General Electric Goods
82	Advance Tech	Inverter, General Electric Goods
83	Nova Auto Bricks	Inverter, General Electric Goods
84	Crown Cement	Substation Equipment, Electric Goods
85	SCM Cement	Substation Equipment, Electric Goods
86	ChinaBangla Ceramic	Inverter, General Electric Goods
87	Monno Ceramics	Substation Equipment, Electric Goods
88	SSRM Steel	MDB, SDB, General Electric Goods
89	CSRM Steel	PFI, General Electric Goods
90	Bangladesh Bank	4000A ATS, General Electric Goods
91	Medicon Pherma	Inverter, Substation Equipment, Electric Goods
92	Shah Cement	Inverter, General Electric Goods
93	Seven Rings Cement	Inverter, General Electric Goods

Awards & Achievements



Our Esteemed Clients

A&B Alo Bitan



A&B Alo Bitan

Show Room :

131, B.C.C Road, Rana Market, Nawabpur, Dhaka-1203, Bangladesh.
Tel : +88 02 4711 5085, 951 2001, Mobile : +088 1711 548558, 01715 198443

Corporate Office :

131, B.C.C Road, Rana Market (2nd Floor), Nawabpur, Dhaka-1203, Bangladesh.
Tel : +88 02 951 2001, Mobile : +88 01715 198443, E-mail : alobitan1@gmail.com

Head Office :

28, Dilkusha Center (5th Floor), Dilkusha C/A, Motijheel, Dhaka-1000, Bangladesh.
Tel/Fax : +88 02 4712 1312, Mobile : +088 1711 548558, E-mail : info@alobitanbd.com

Factory :

79/10, Kazlarpar, Bir-Muktijoddha Mozzaffar Sarak, Jatrabari, Dhaka-1236, Bangladesh.
Tel : +88 02 7541714, Mobile : +88 01718 421254, 01755 699978

